

CNC-Machined Hood Hinges are the perfect solution to eliminate the common issues found in the original hinges of classic Mustangs. By using high-strength aluminum, the design maintains excellent rigidity while keeping the overall weight low. Each component has undergone FEA (Finite Element Analysis), confirming durability and ensuring the hood remains stable when fully opened—eliminating the risk of uncontrolled dropping or vibrations. This significantly improves safety when working on the car while preserving the original appearance of the Mustang and enhancing overall functionality.

LIGHTWEIGHT AND DURABLE PA9 ALUMINUM**COMPONENT DESIGNED IN CAD
ENVIRONMENT****CNC MACHINING****HIGH STRENGTH**

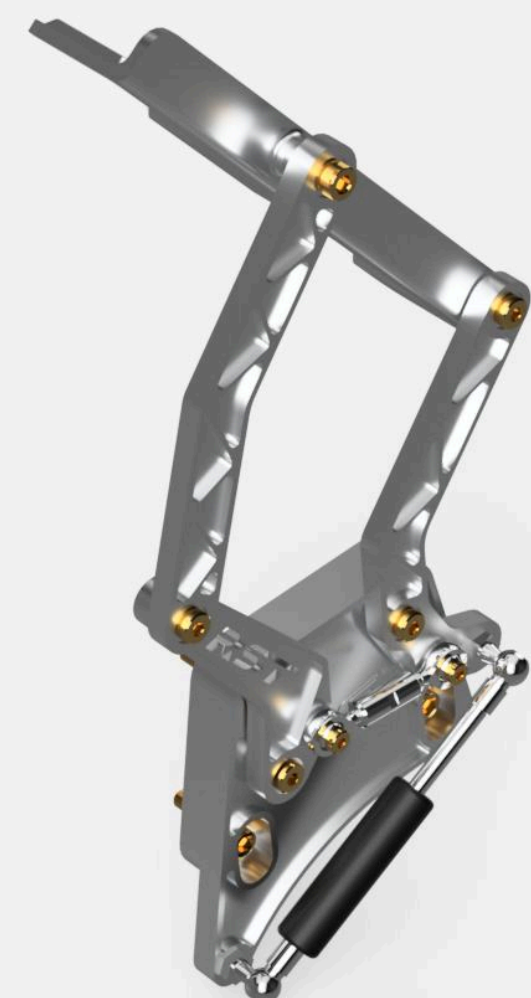


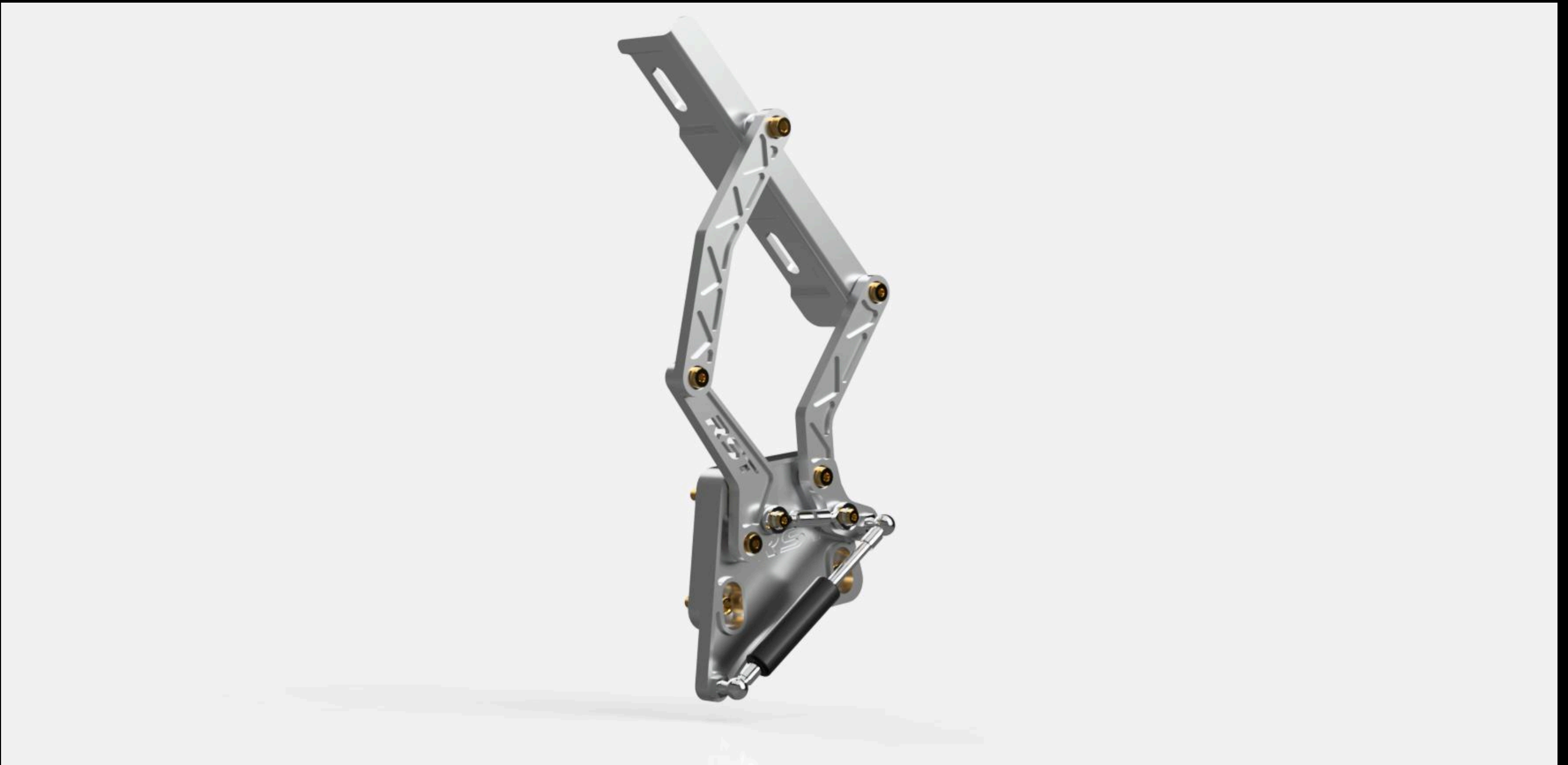
PRODUCT DESCRIPTION

The design, created in a CAD environment and based on 3D scans of the vehicle, ensures a perfect fit to the original body components. The hinges are manufactured from high-strength PA9 (7075) aluminum, which is resistant to corrosion and environmental factors. CNC machining guarantees exceptional precision, allowing for accurate and rigid mounting to the body. The use of modern materials and technologies minimizes play and vibrations, ensuring maximum hood stability. Equipped with gas struts that hold the hood securely in the open position, the system eliminates the risk of accidental closure, significantly enhancing safety during maintenance.

KEY PRODUCT FEATURES

- Increased stability compared to OEM hinges
- Design validated through FEA (Finite Element Analysis)
- Developed based on 3D scans of the original bodywork



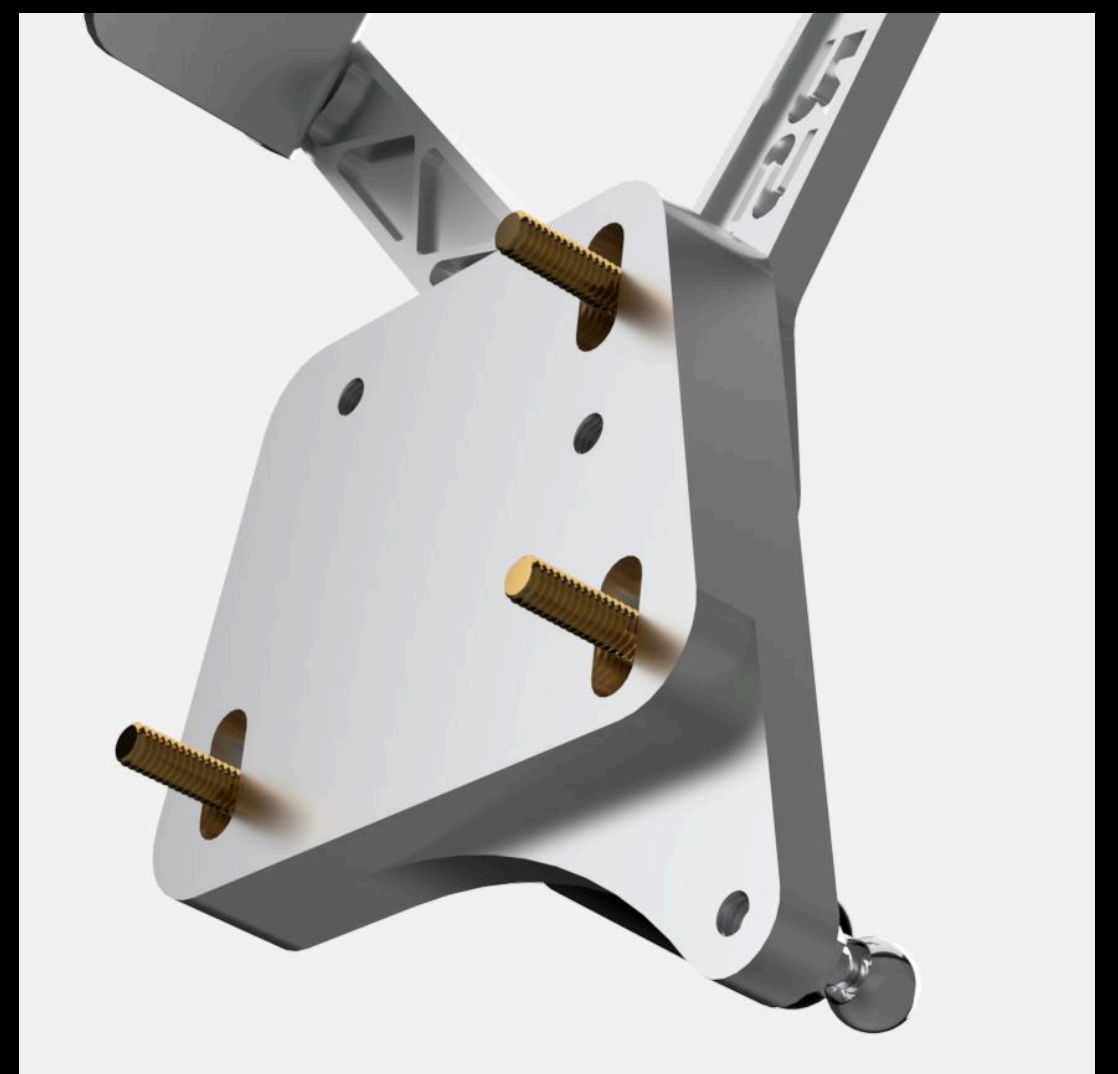
**THE KIT INCLUDES**

- CNC-milled hood hinge bodies (2 pcs.)
- Gas struts (2 pcs.)
- Mounting kit

APPLICATIONS

This product is compatible with the following Ford Mustang model years:

- Ford Mustang Fastback 1964/5-1966
- Ford Mustang Fastback 1967-1968
- Ford Mustang Coupe 1964/5-1966
- Ford Mustang Coupe 1967-1968
- Ford Mustang Convertible 1964/5-1966
- Ford Mustang Convertible 1967-1968





INSTALLATION INSTRUCTIONS

Technical data sheet



DIFFICULTY LEVEL

Medium-level installation. Intended for installation by qualified personnel.



NOTES

*Before purchasing, make sure the product fits your vehicle

CONTACT

+48 572 323 272

biuro@restomotive.eu

www.restomotive.eu