



Upper shock mounts play a crucial role in ensuring a stable and secure connection between the shock absorber and the vehicle's chassis, which is essential for proper suspension performance. Our mounts have been carefully engineered to withstand high mechanical loads encountered during driving, especially under challenging road conditions or during dynamic driving.

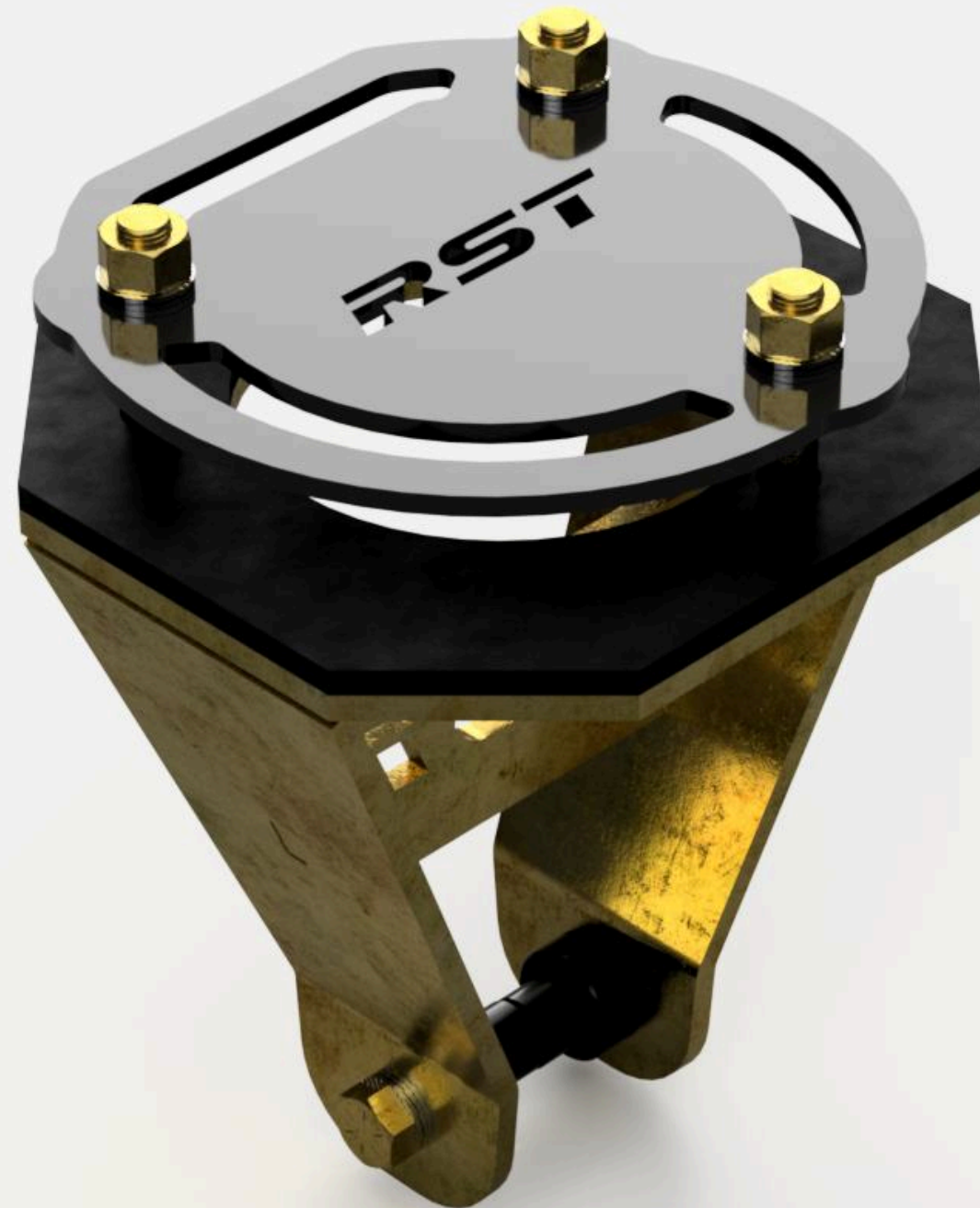
**HIGH RESISTANCE TO MECHANICAL DAMAGE**

**PROPER POSITIONING ENHANCES DRIVING COMFORT AND VEHICLE STABILITY.**

**MORE SECURE SHOCK ABSORBER MOUNTING COMPARED TO THE FACTORY SOLUTION**

**BOLT ON SUSPENSION**





#### PRODUCT DESCRIPTION

The upper shock mount is manufactured from high-strength S355 structural steel. The components were designed using CAD software to ensure maximum precision, and laser cutting technology was employed to accurately shape each part. The precisely cut and bent elements are then welded together into a single robust assembly. This durable construction guarantees a secure shock absorber mounting, directly enhancing vehicle handling and improving suspension accuracy. Installation of the mounts requires no modifications to the vehicle's structure, as they fit perfectly into the original chassis mounting points, ensuring a solid fit without any play. An upper flange is bolted onto the top of the shock mount, providing additional mounting stability.

#### KEY PRODUCT FEATURES

- Designed using CAD for precise engineering
- Significant improvement in vehicle handling and control
- Suspension design modified to allow shock absorber mounting in the lower control arm







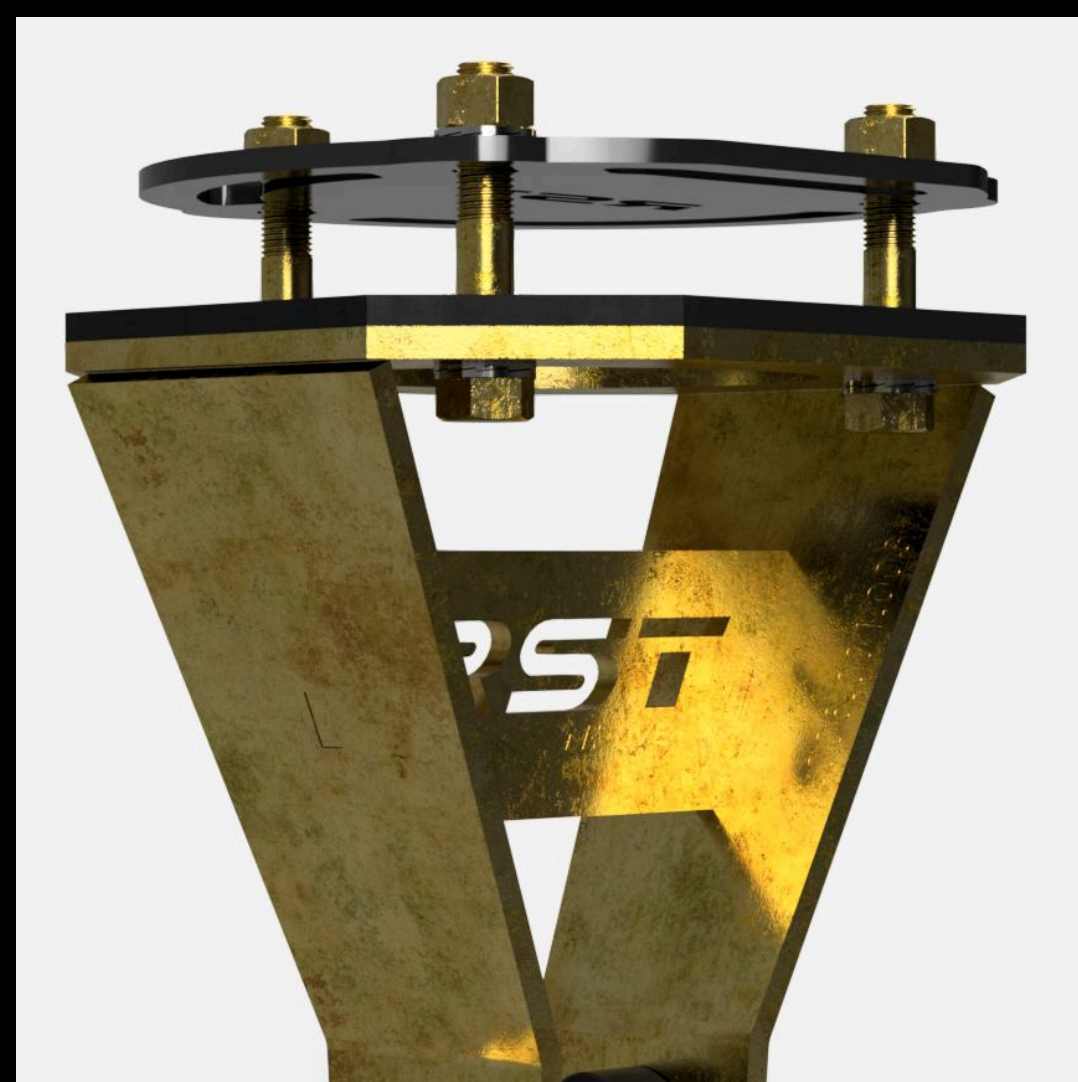
#### THE KIT INCLUDES

- Welded upper shock mount body
- Mounting kit

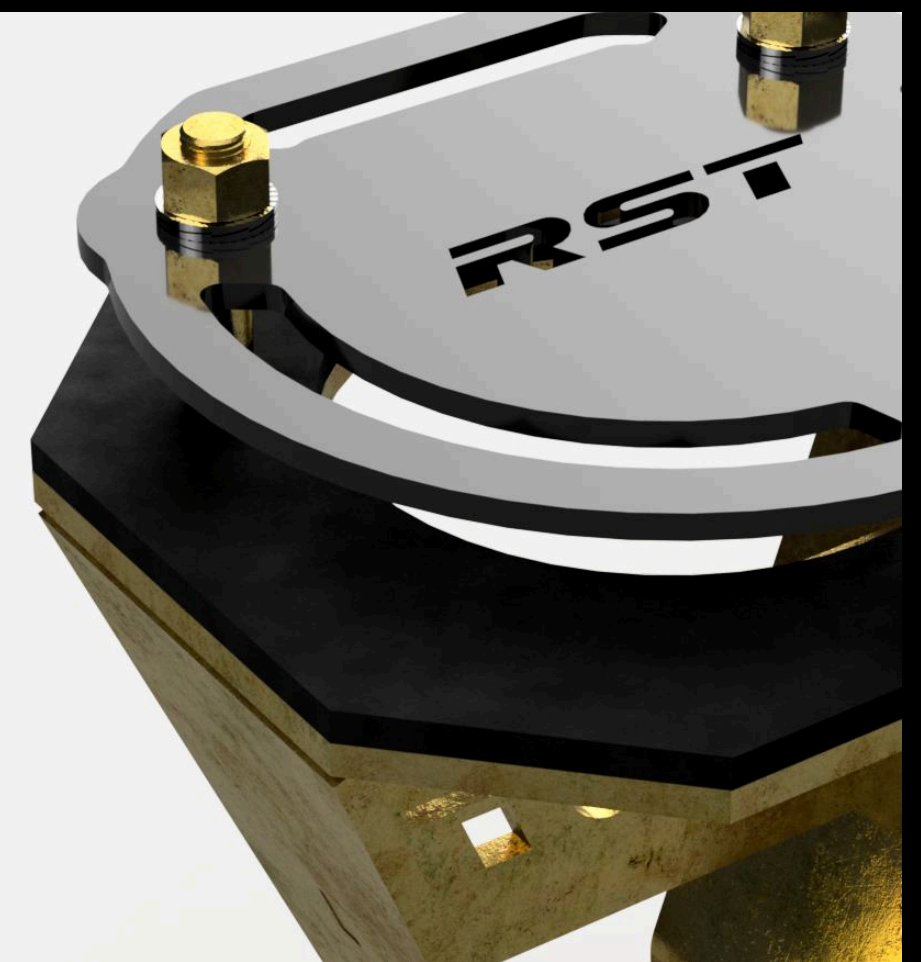
#### APPLICATION

This product is compatible with the following Ford Mustang model years:

- Ford Mustang Fastback 1964/5-1966
- Ford Mustang Fastback 1967-1968
- Ford Mustang Coupe 1964/5-1966
- Ford Mustang Coupe 1967-1968
- Ford Mustang Convertible 1964/5-1966
- Ford Mustang Convertible 1967-1968







#### INSTALLATION INSTRUCTIONS

Technical data sheet

#### DIFFICULTY LEVEL

Advanced - installing this product requires extensive specialist knowledge.

#### NOTES

\*Before purchasing, ensure that the product is compatible with your vehicle

#### CONTACT

+48 572 323 272

biuro@restomotive.eu

[www.restomotive.eu](http://www.restomotive.eu)