



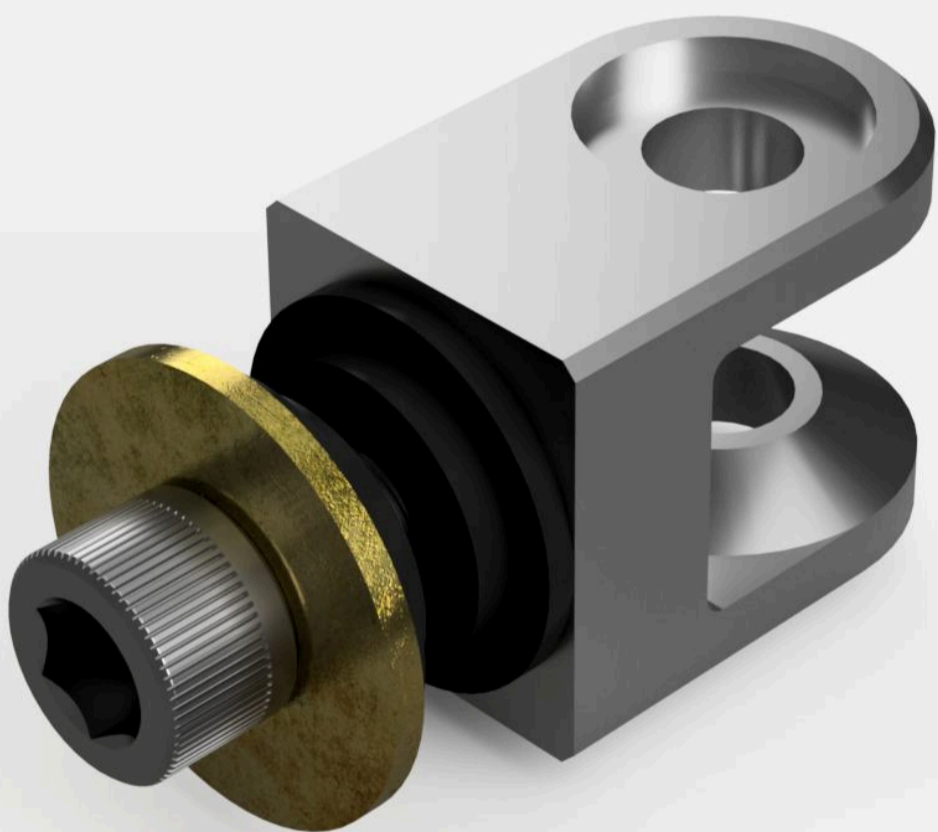
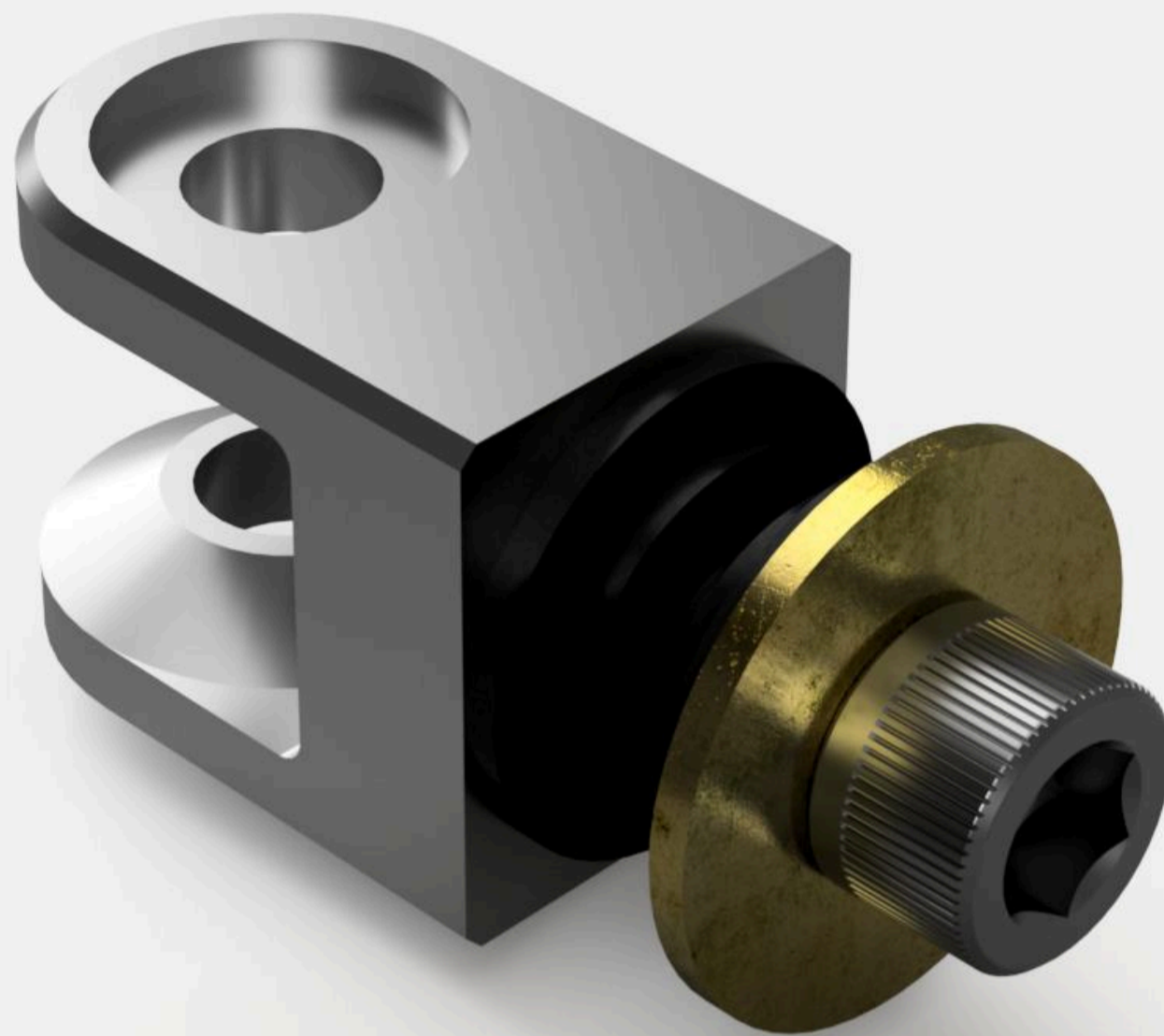
The CNC-machined mounting for the trailing arm is made from high-quality aluminum. It is a precise billet component that serves as the link between the reaction rod and the vehicle body. It is designed to provide a secure connection for the trailing arm while allowing the use of a spherical bearing.

HIGH RESISTANCE TO MECHANICAL DAMAGE

LIGHTWEIGHT AND DURABLE PA9 ALUMINUM

IMPROVED STABILITY

BOLT-ON SUSPENSION

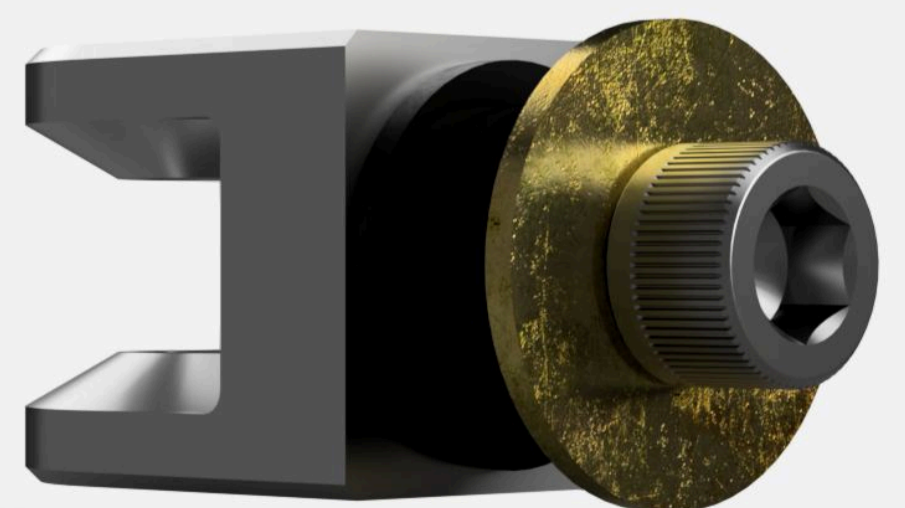


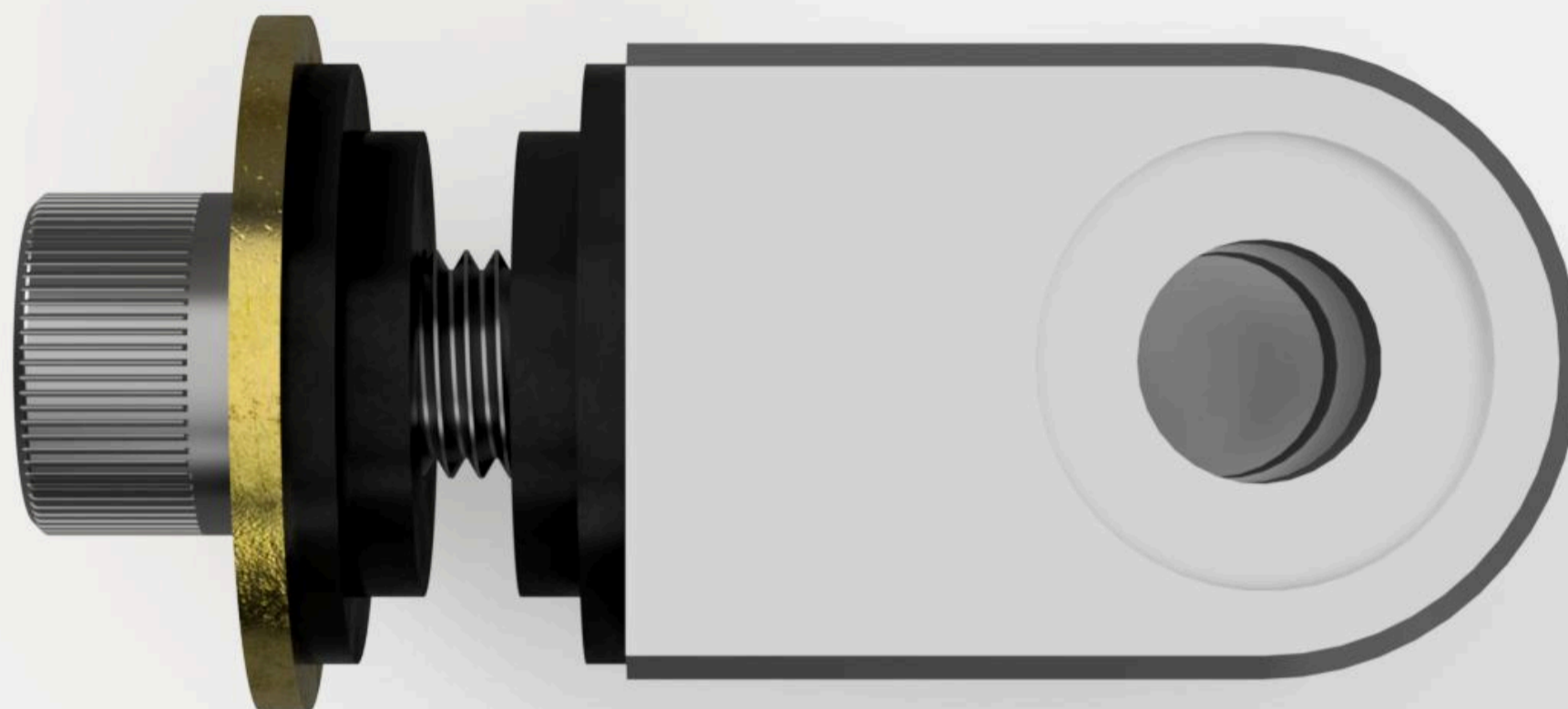
PRODUCT DESCRIPTION

The component was designed in a CAD environment, ensuring precision down to tenths of a millimeter, and was also subjected to FEA (Finite Element Analysis) to guarantee a robust construction capable of withstanding all forces acting on the suspension. The use of high-strength PA9 aluminum protects against deformation while keeping the structure lightweight. A secure mounting to the vehicle body improves handling and provides stiffness to the suspension itself, eliminating any potential clearances.

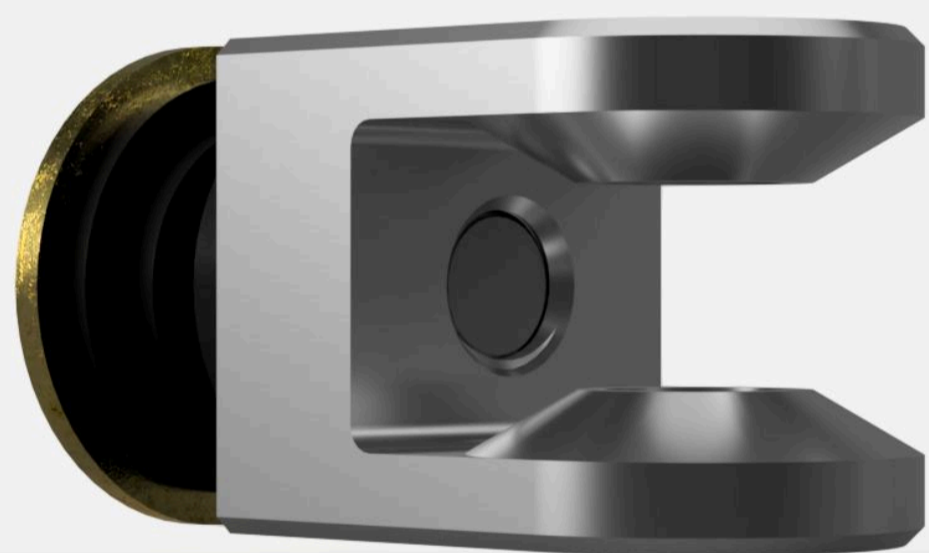
KEY PRODUCT FEATURES

- Designed using a CAD environment
- Compatible with adjustable-length trailing arm
- Significant improvement in vehicle handling



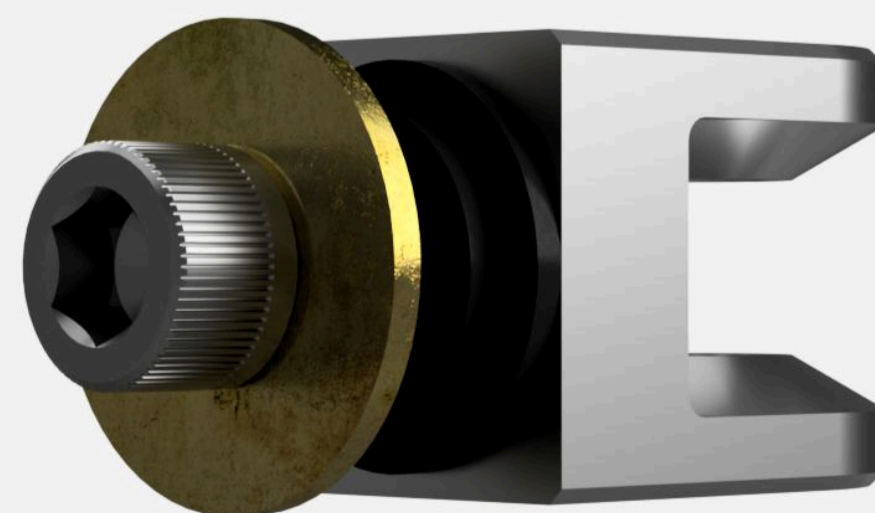
**THE KIT INCLUDED**

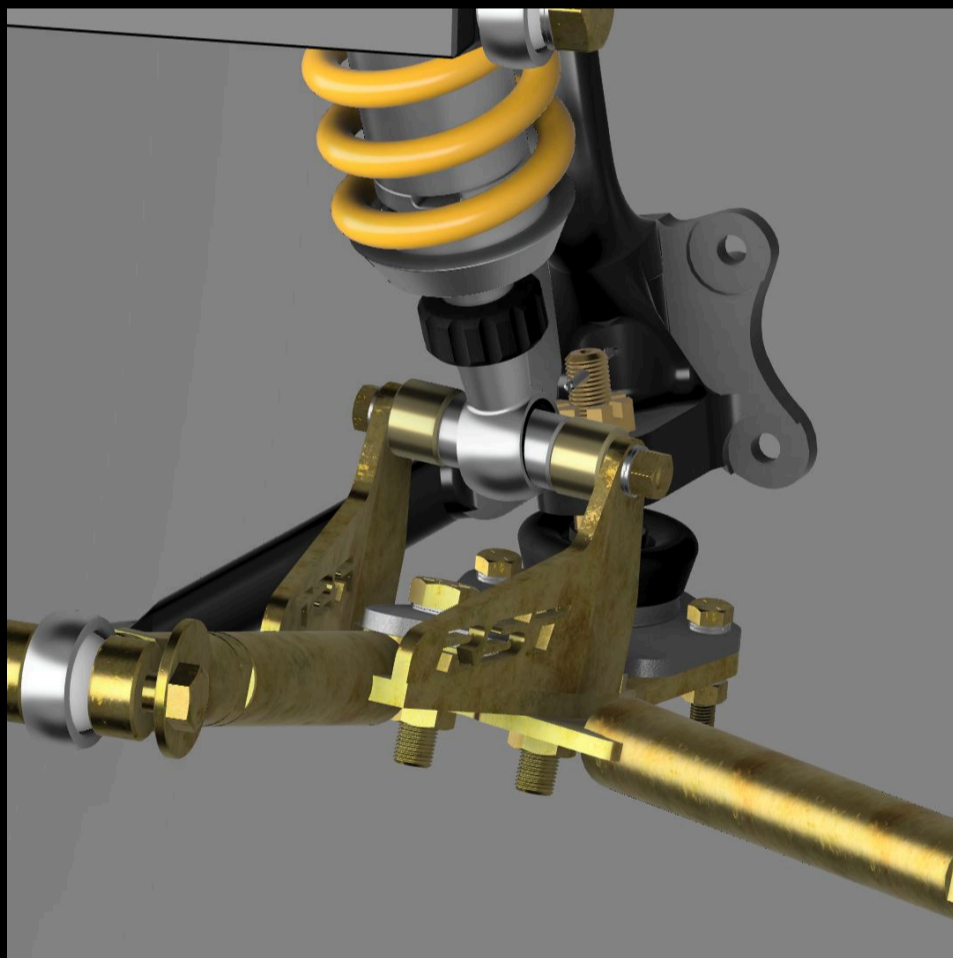
- CNC-machined trailing arm mount eye body (1 pc.)
- Mounting kit

**APPLICATION**

This product is compatible with the following Ford Mustang model years:

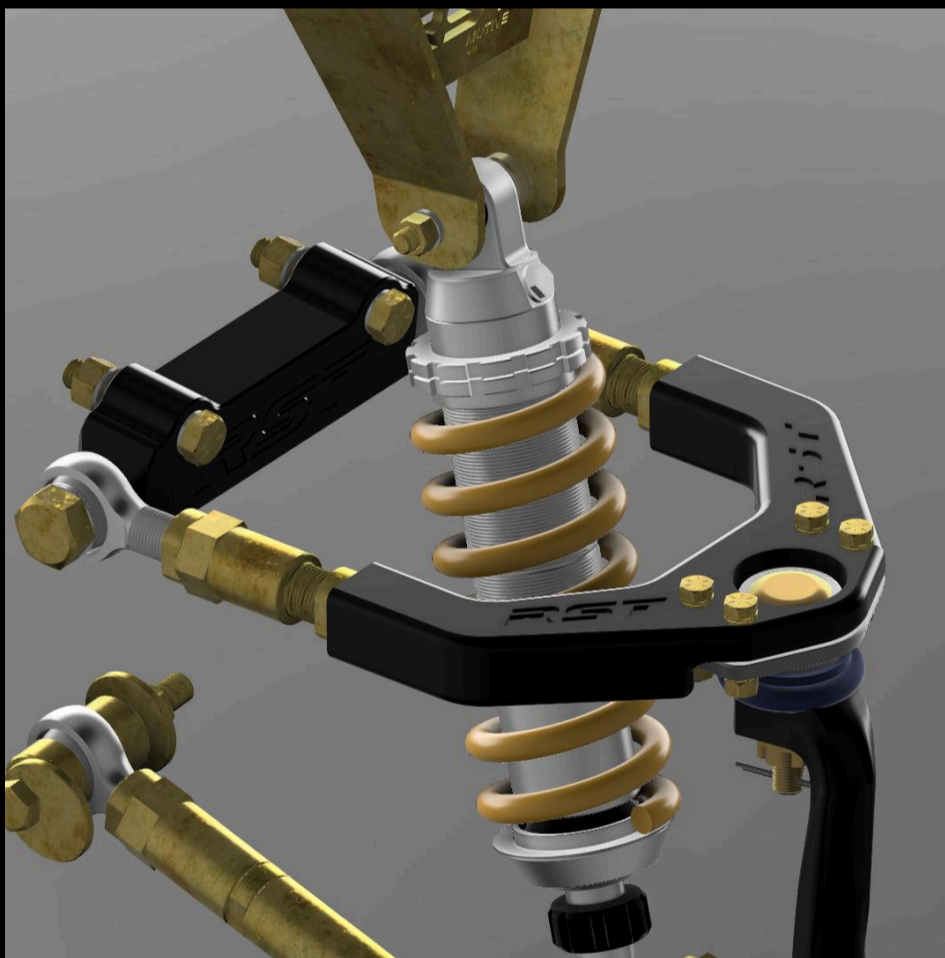
- Ford Mustang Fastback 1964/5-1966
- Ford Mustang Fastback 1967-1968
- Ford Mustang Coupe 1964/5-1966
- Ford Mustang Coupe 1967-1968
- Ford Mustang Convertible 1964/5-1966
- Ford Mustang Convertible 1967-1968





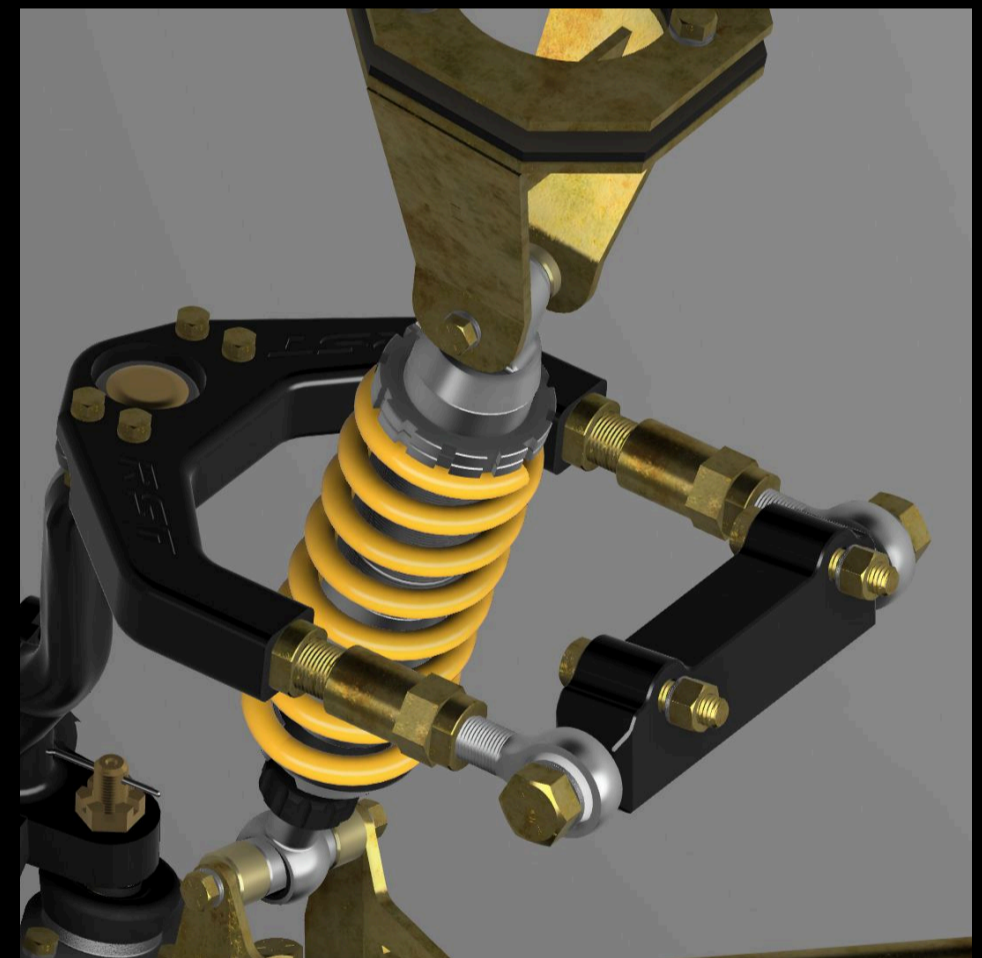
INSTALLATION INSTRUCTIONS

Technical data sheet



DIFFICULTY LEVEL

Advanced - installing this product requires extensive specialist knowledge.



NOTES

*Before purchasing, ensure that the product is compatible with your vehicle

CONTACT

+48 572 323 272

biuro@restomotive.eu

www.restomotive.eu