



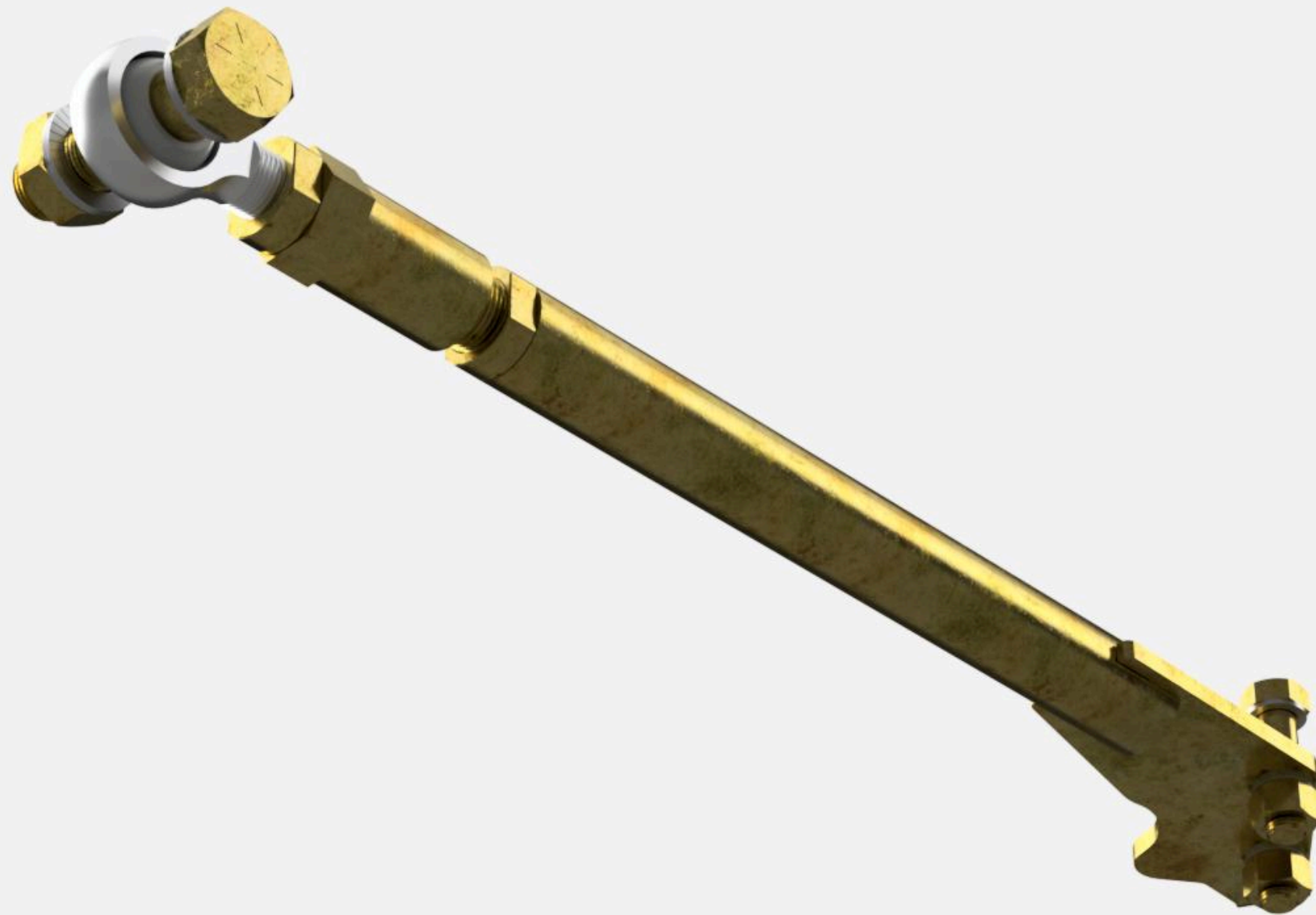
A durable and precise right diagonal control arm specifically designed for classic Ford Mustang models. Its design focuses on combining high stiffness, durability, and adjustability, making it an ideal alternative to the standard suspension. Installation is completely hassle-free—the part fits “plug & play” with no need for any modifications to the bodywork.

HIGH RESISTANCE TO MECHANICAL DAMAGE

HIGH-QUALITY CRAFTSMANSHIP

BASED ON 3D SCANS OF FACTORY MUSTANGS

BOLT-ON SUSPENSION



PRODUCT DESCRIPTION

The design in the CAD environment allowed for a perfect fit to the factory mounting points and optimized the geometry for durability. The component was additionally tested using FEA (Finite Element Analysis) to ensure resistance to high loads and long-term use. The main part of the control arm is made from high-strength S355 steel tubing, providing excellent deformation resistance. Length adjustment is achieved via a turnbuckle made from high-grade 40HMT alloy steel, allowing suspension geometry tuning to improve handling characteristics. To enhance corrosion resistance and aesthetics, the entire assembly has been zinc-plated in a gold color, giving the part a professional appearance while ensuring lasting performance. The control arm also features a dedicated mount for a bump stop, preserving the original suspension functionality.

KEY PRODUCT FEATURES

- Durable construction: The design has been tested using FEA (Finite Element Analysis) to simulate forces acting within the system
- Designed using 3D CAD environment
- CNC machining



**THE KIT INCLUDES**

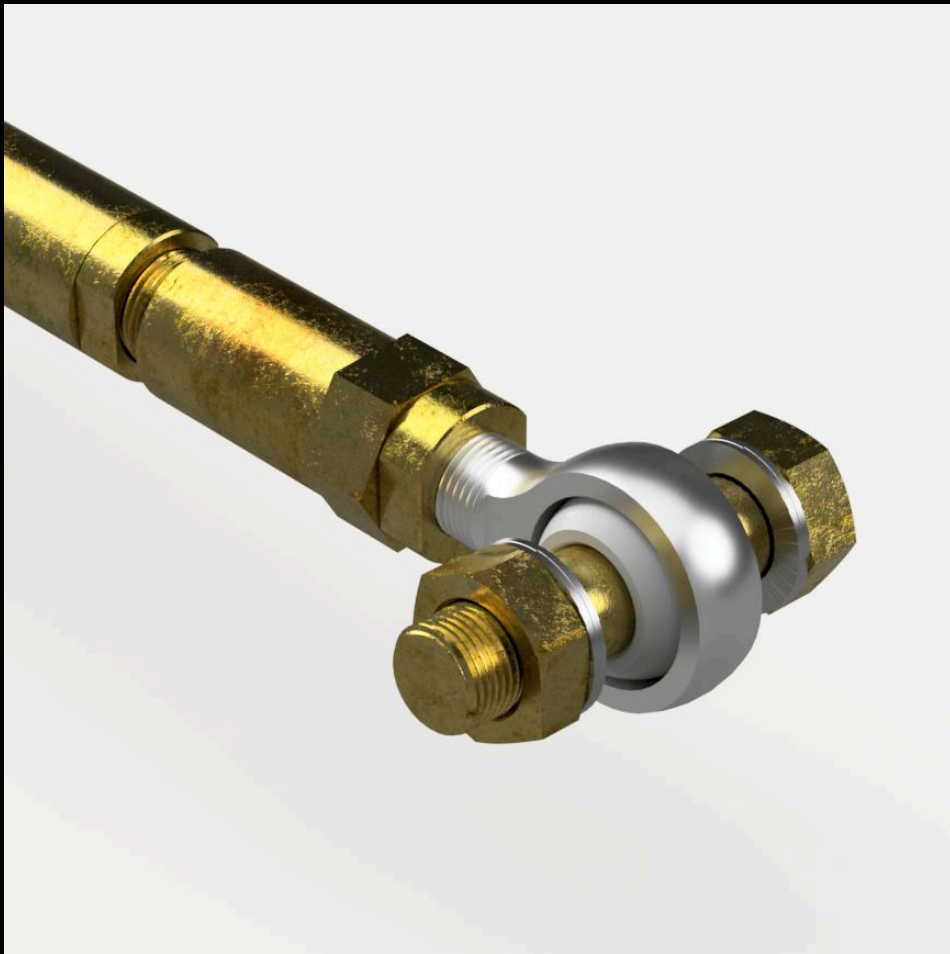
- Left diagonal control arm body (1 pc.)
- Spherical bearings (uniballs) (1 pc.)
- Turnbuckle bolts (1 pc.)
- Mounting hardware kit

APPLICATION

This product is compatible with the following Ford Mustang model years:

- Ford Mustang Fastback 1964/5-1966
- Ford Mustang Fastback 1967-1968
- Ford Mustang Coupe 1964/5-1966
- Ford Mustang Coupe 1967-1968
- Ford Mustang Convertible 1964/5-1966
- Ford Mustang Convertible 1967-1968





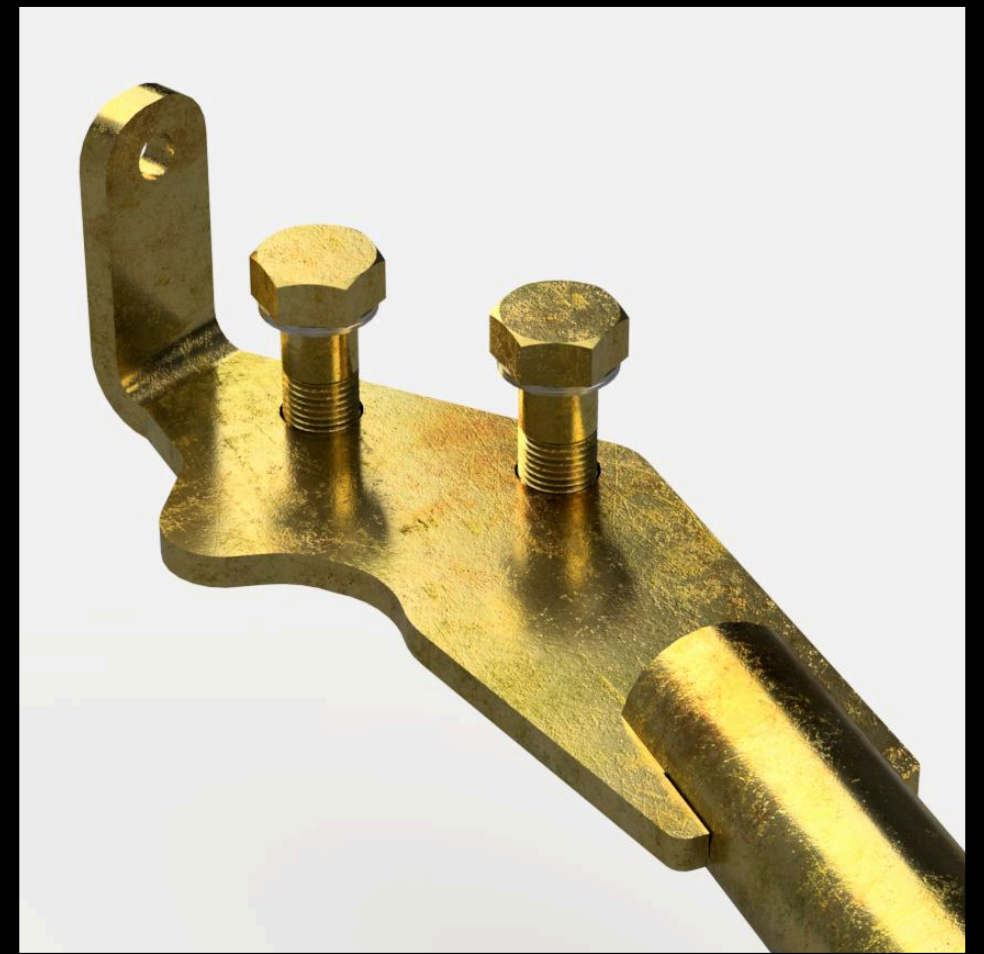
INSTALLATION INSTRUCTIONS

Technical data sheet



DIFFICULTY LEVEL

Advanced – installing this product requires extensive specialist knowledge



NOTES

*Before purchasing, please ensure that the product is compatible with your vehicle.

CONTACT

+48 572 323 272

biuro@restomotive.eu

www.restomotive.eu