

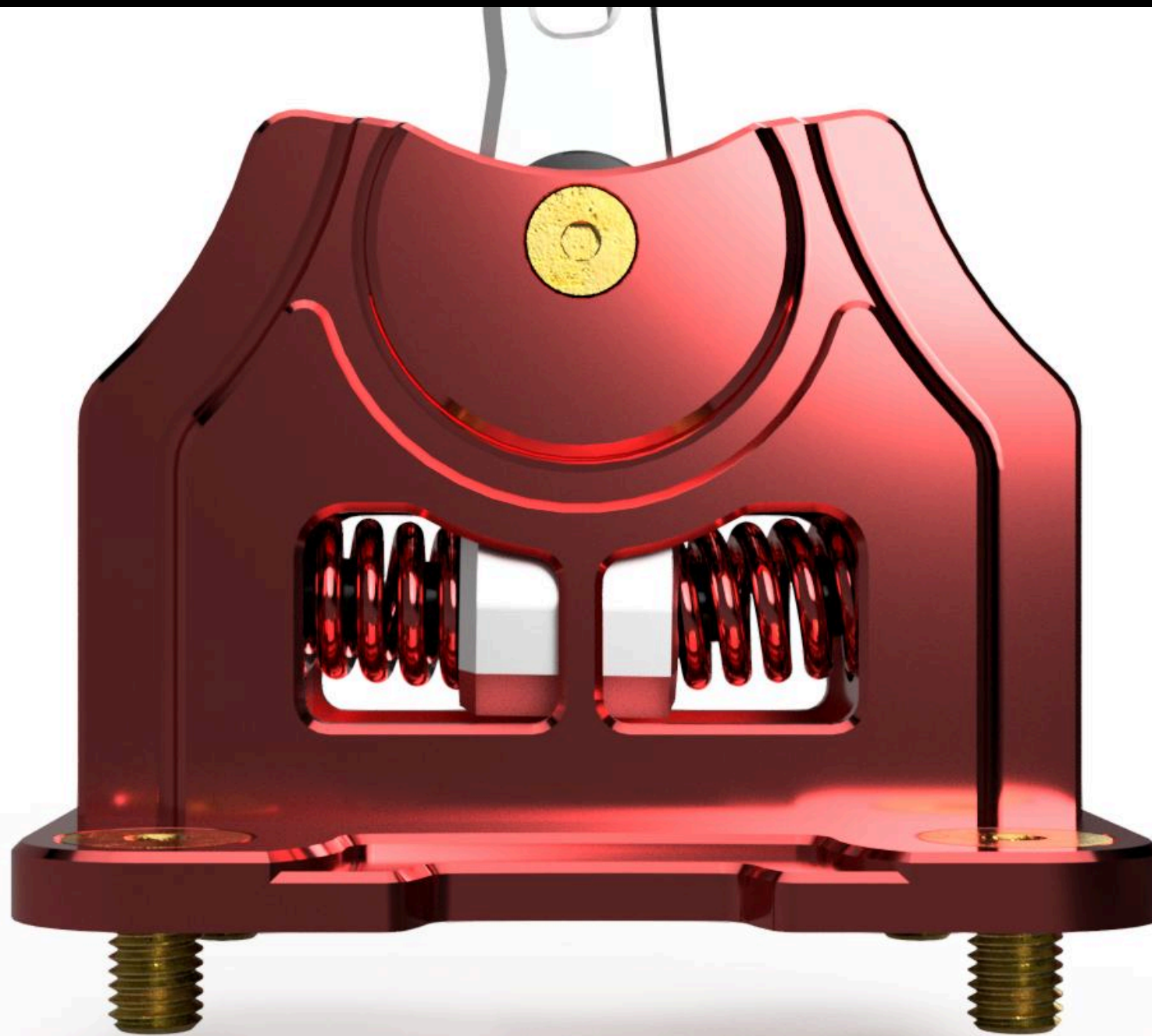
The shifter for automatic transmissions is a professional solution for automotive enthusiasts who demand maximum control and enhanced shift precision. Its robust construction and refined aesthetics make it suitable both for motorsport applications, where durability is critical, and for projects focused on elegance.

IMPROVED SHIFT PRECISION

HIGH-QUALITY CRAFTSMANSHIP

CNC MACHINING

DESIGN CREATED USING A 3D CAD
ENVIRONMENT

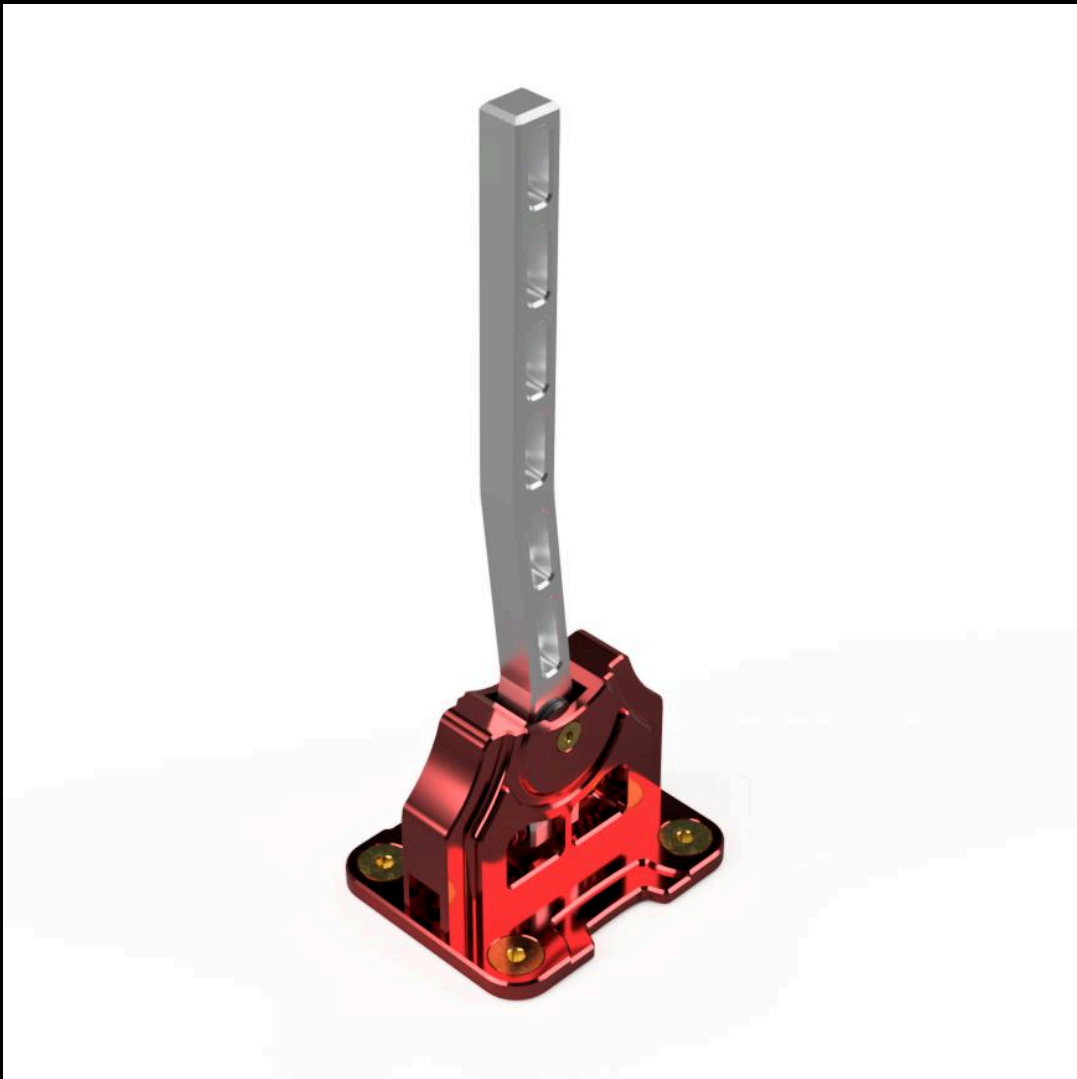
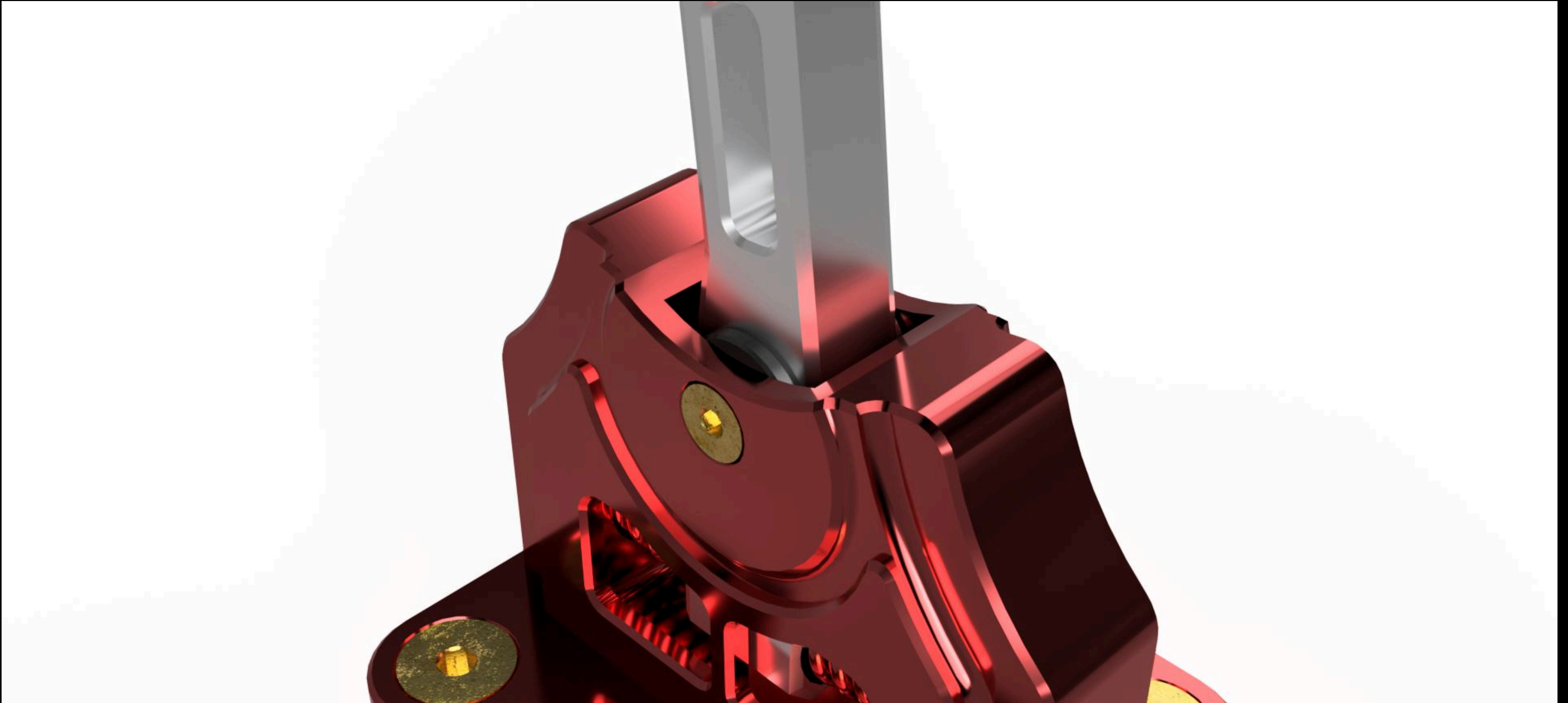
**PRODUCT DESCRIPTION:**

The shifter's construction is based on PA9 (7075) aluminum, providing high strength and durability. Gear changes are performed in a sequential manner (+/-). The lower mounting flange is designed to be compatible with a wide range of vehicles on the market, regardless of brand. Two springs integrated into the housing provide tactile resistance and return the lever to the center position. The electrical signal is triggered by two limit switches. Several anodized color options are available: black, blue, red, or raw aluminum. The component is manufactured using CNC milling technology.

KEY PRODUCT FEATURES:

- Precision: The design was developed in a CAD environment, ensuring high accuracy and quality
- Durable construction: The design was tested using FEA (Finite Element Analysis) to simulate the forces acting within the system
- Anodized surface: To enhance surface durability and maintain a high level of aesthetics, the component underwent an anodizing process.

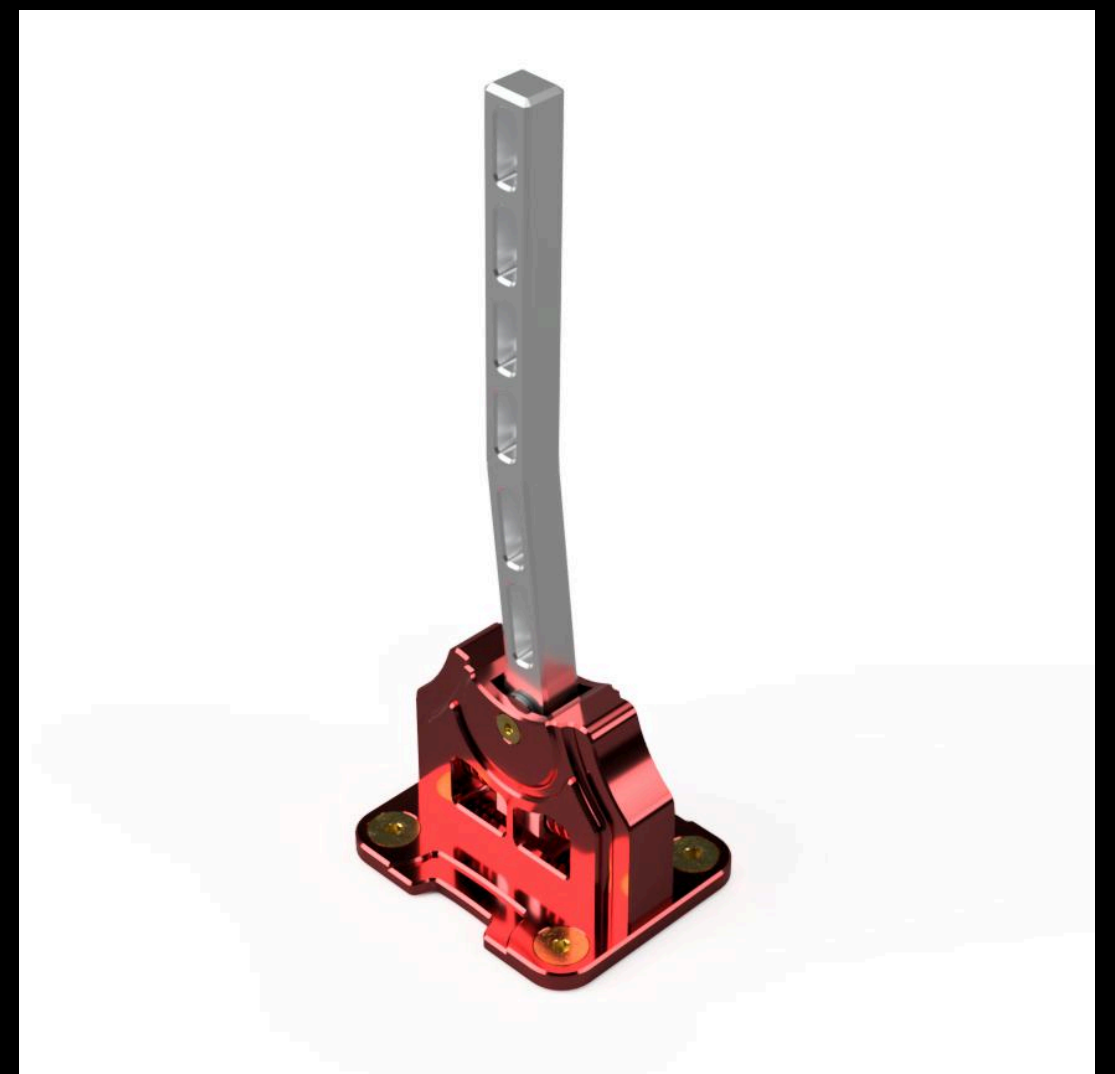


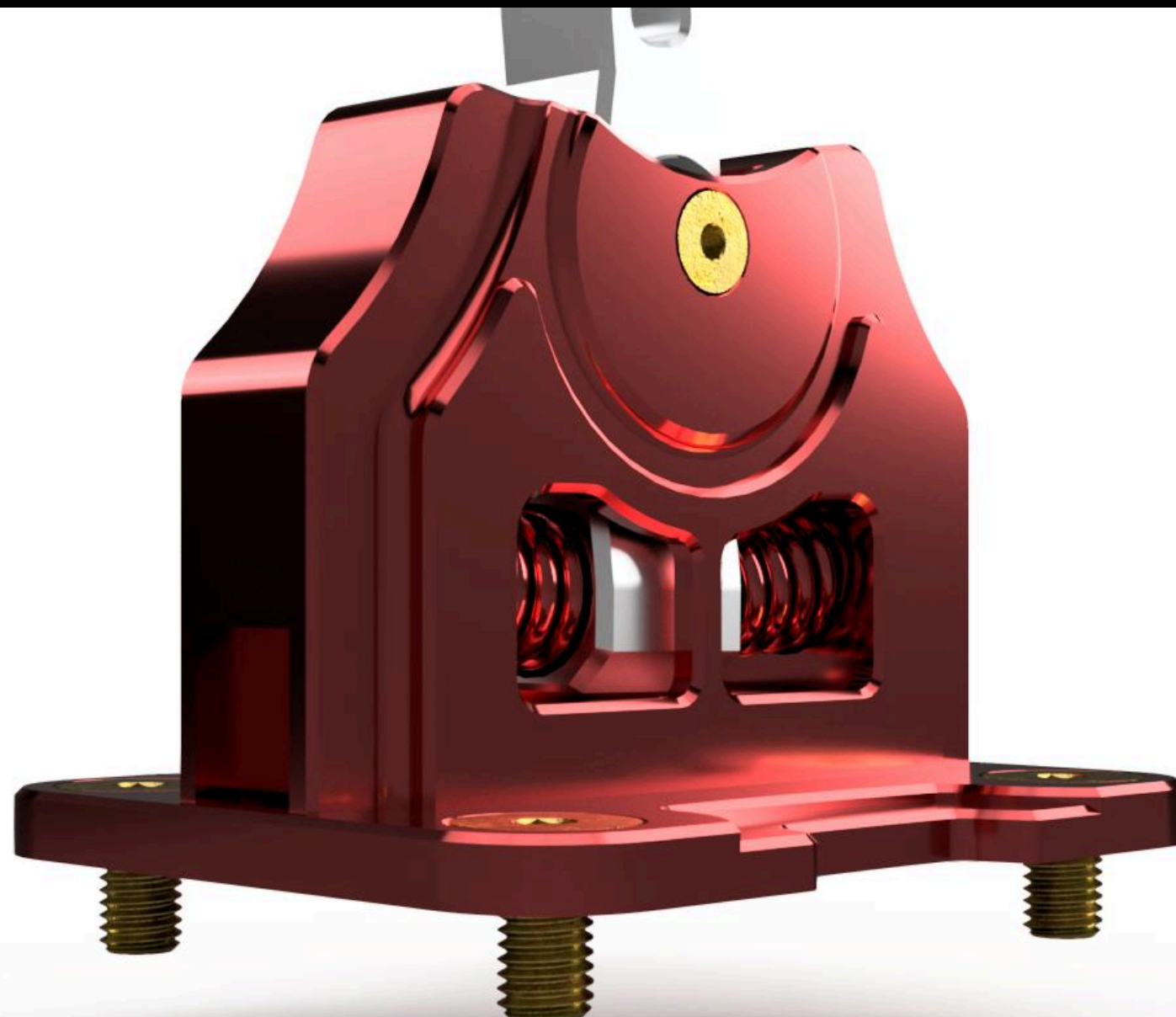
**SET INCLUDES:**

- Two-piece housing
- Gear shift lever
- Limit switches (2 pcs)
- Compression springs (2 pcs)
- Wiring harness for shifter connection

APPLICATION:

The product is designed for a wide range of applications in sports, racing, and performance-tuned vehicles.





INSTALLATION INSTRUCTIONS:

TECHNICAL DATA SHEET

DIFFICULTY LEVEL:

Intermediate. Intended for installation by qualified individuals.

NOTES:

*Before purchasing, make sure the product is compatible with your vehicle.

CONTACT:

☎ +48 572 323 272

✉ biuro@restomotive.eu

www.restomotive.eu