



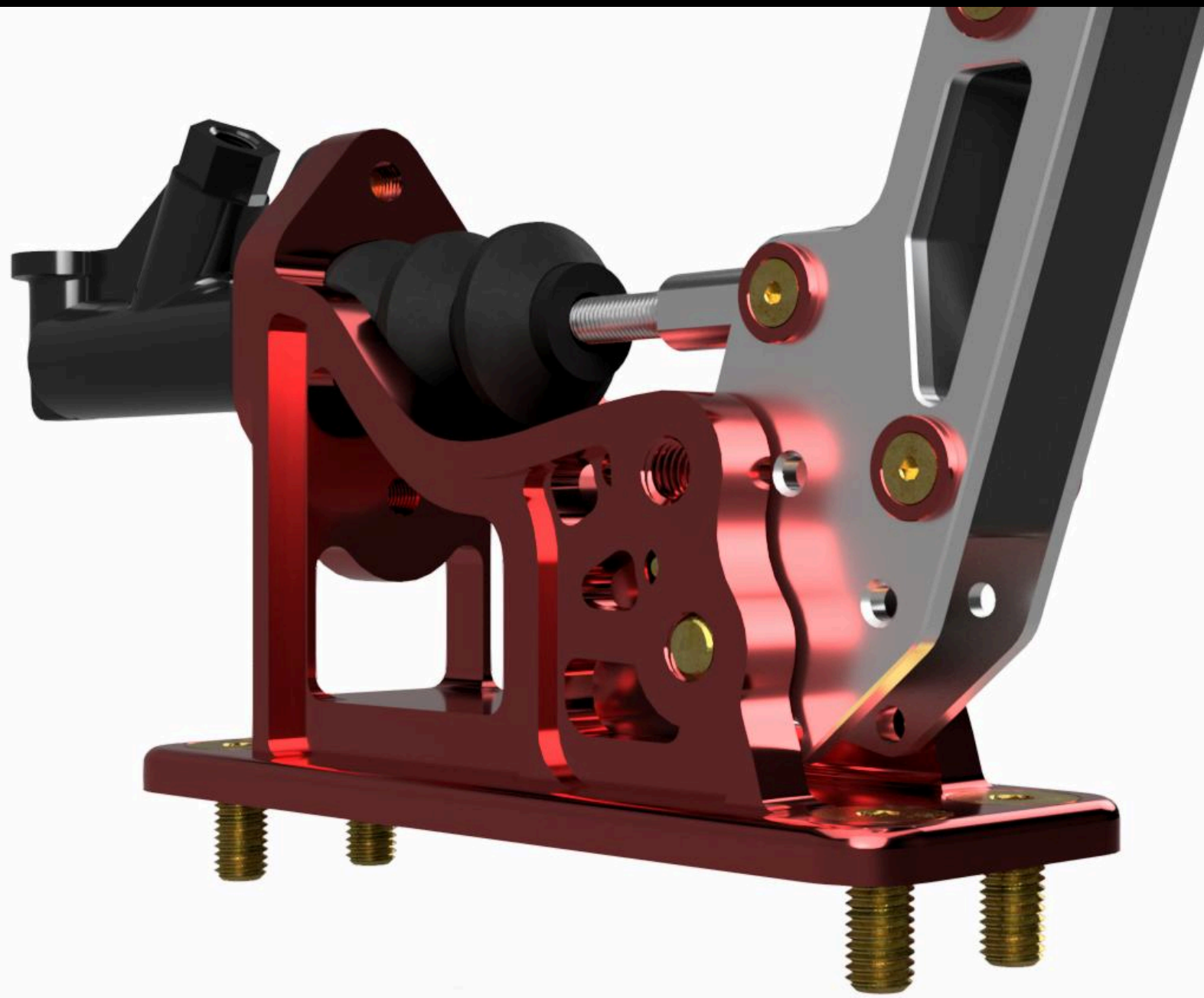
The hydraulic handbrake is an essential tool in any car built for drifting, rallycross, or time attack, where precise rear-end control determines both performance and driving style. Our design was developed with maximum durability, effectiveness, and ergonomics in mind. The project is compatible with the Wilwood GS Compact master cylinder series. Features a removable grip, allowing for various configuration options.

IMPROVED HANDBRAKE PRECISION

DESIGN CREATED USING A 3D CAD ENVIRONMENT

HIGH-QUALITY WORKMANSHIP

CNC MACHINING

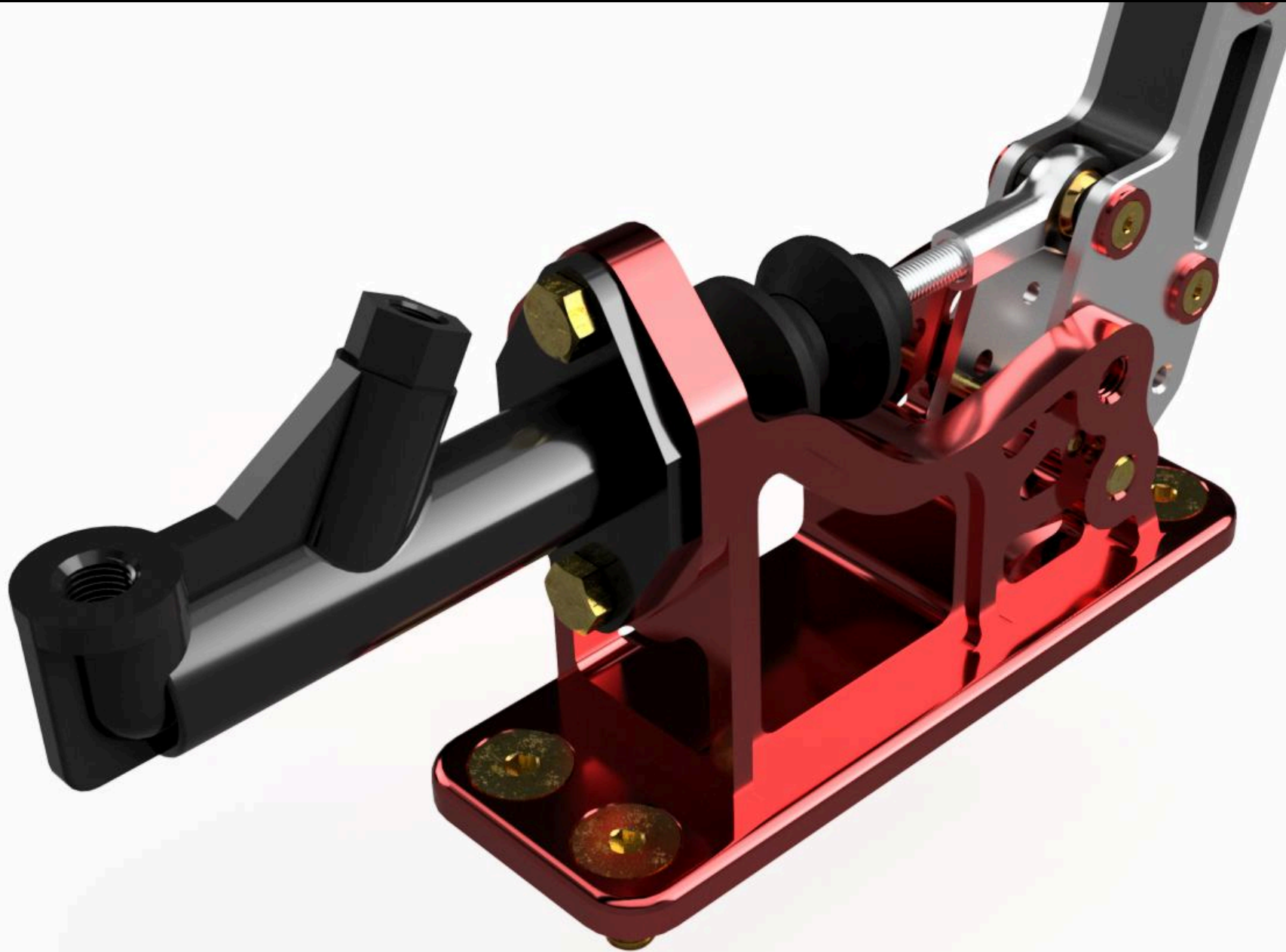
**PRODUCT DESCRIPTION:**

The construction features a composite core reinforced with carbon fiber, enclosed in PA9 (7075) aluminum plates. The lower mount for the hydraulic master cylinder is CNC-machined from PA9 (7075) aluminum. The anodized surface not only enhances aesthetics but also increases surface resistance. The system is based on an independent hydraulic cylinder, allowing the handbrake to operate separately from the factory braking system, without negatively affecting its performance. Engineered for heavy-duty use, it's ready to perform where quick response and reliability are critical.

KEY PRODUCT FEATURES:

- Precision: The design was developed in a CAD environment, ensuring high accuracy and quality
- Durable construction: The design was tested using FEA (Finite Element Analysis) to simulate the forces acting within the system
- Anodized surface: An anodizing process was carried out to improve the surface's resistance to oxidation.





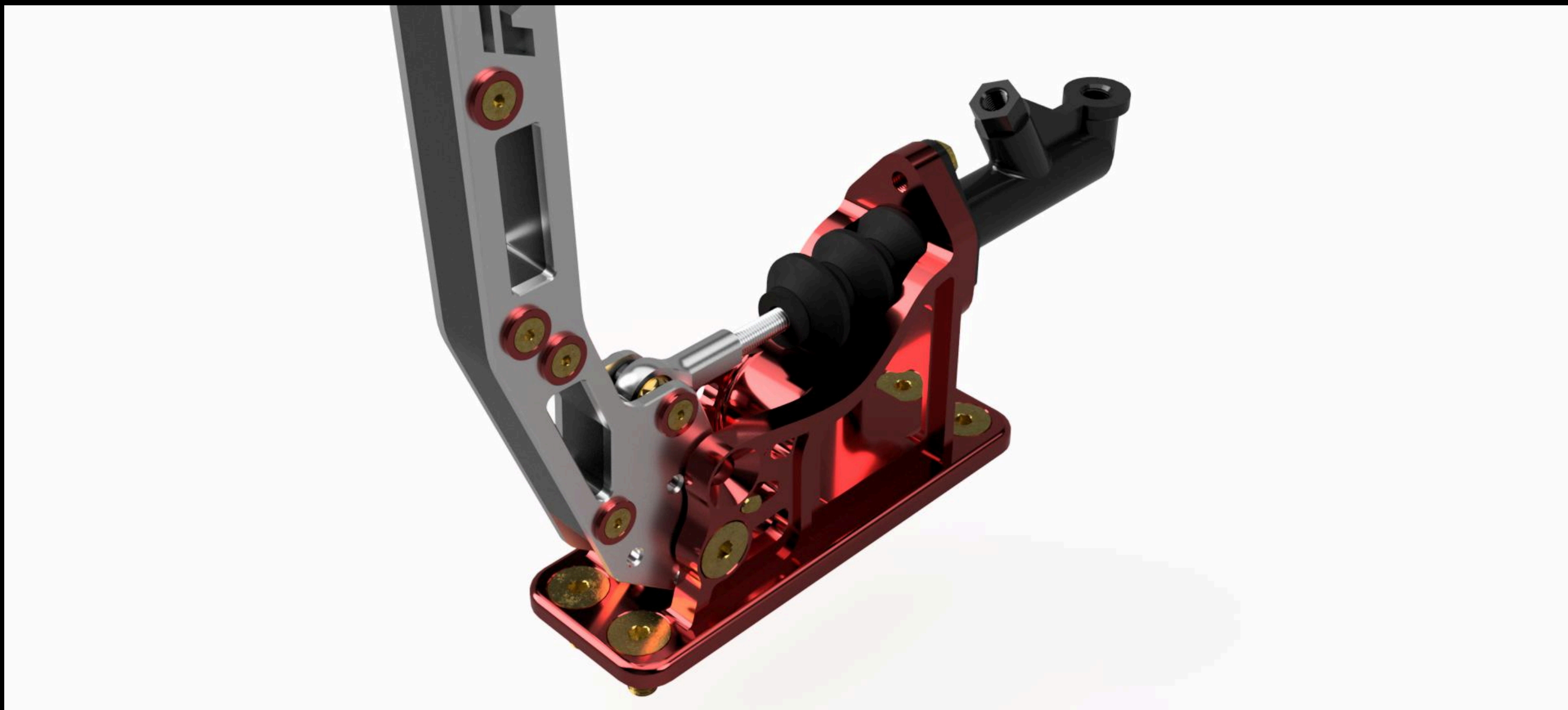
SET INCLUDES:

- Housing
- Mounting kit
- Composite lever

APPLICATION:

The product is intended for a wide range of applications in sports, racing, and performance-tuned vehicles.





INSTALLATION INSTRUCTIONS:

TECHNICAL DATA SHEET

DIFFICULTY LEVEL:

Intermediate. Intended for installation by qualified individuals.

NOTES:

Before purchasing, make sure the product is compatible with your vehicle.

CONTACT:

+48 572 323 272

biuro@restomotive.eu

www.restomotive.eu