

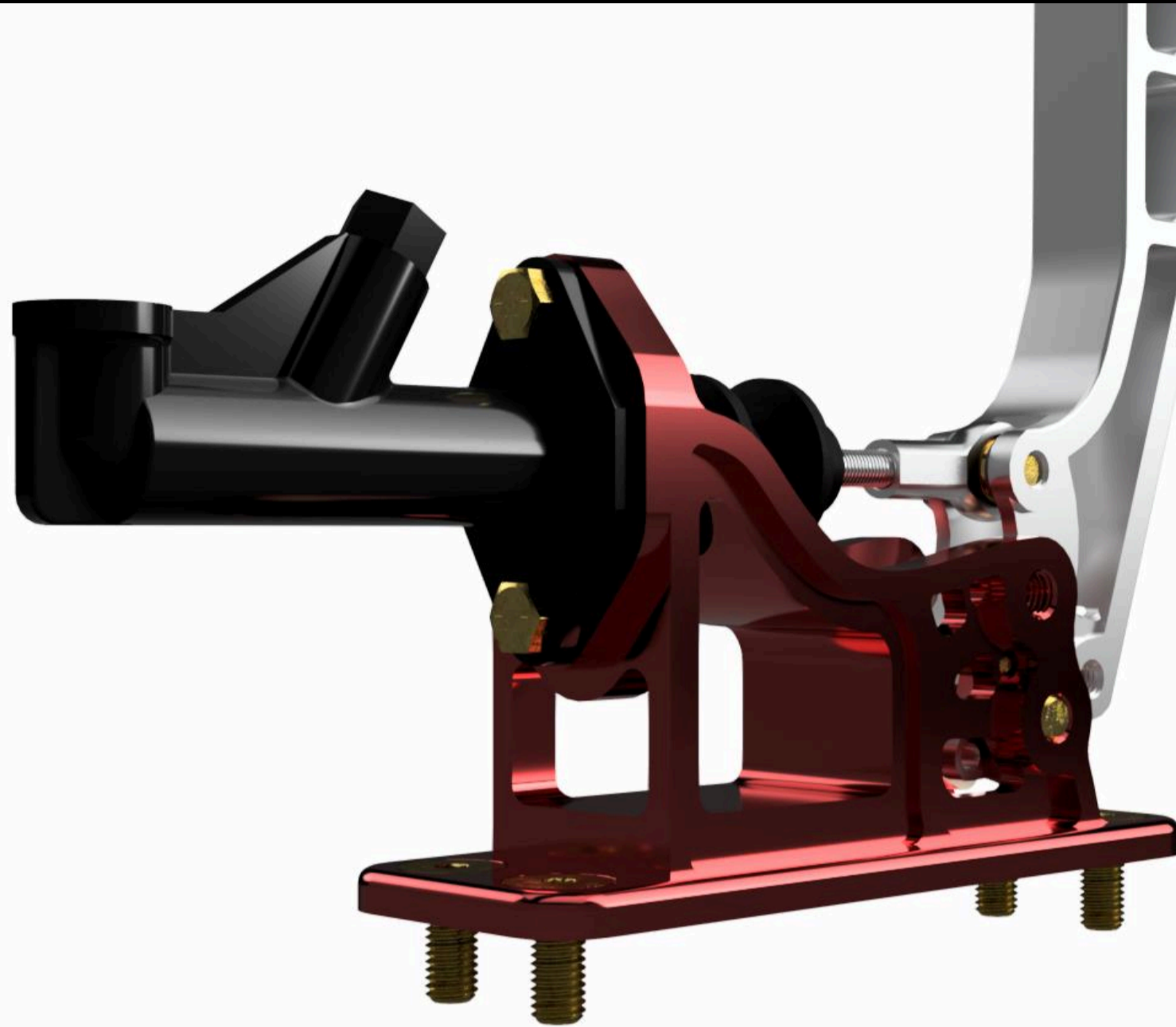
The hydraulic handbrake is an essential tool in any car built for drifting, rallycross, or time attack, where precise rear-end control determines both lap times and driving style. Our design was developed with maximum durability, effectiveness, and ergonomics in mind. The project is compatible with the Wilwood GS Compact master cylinder. Features a removable grip, allowing for various configuration options.

IMPROVED HANDBRAKE PRECISION

DESIGN CREATED USING A 3D CAD ENVIRONMENT

HIGH-QUALITY WORKMANSHIP

CNC MACHINING

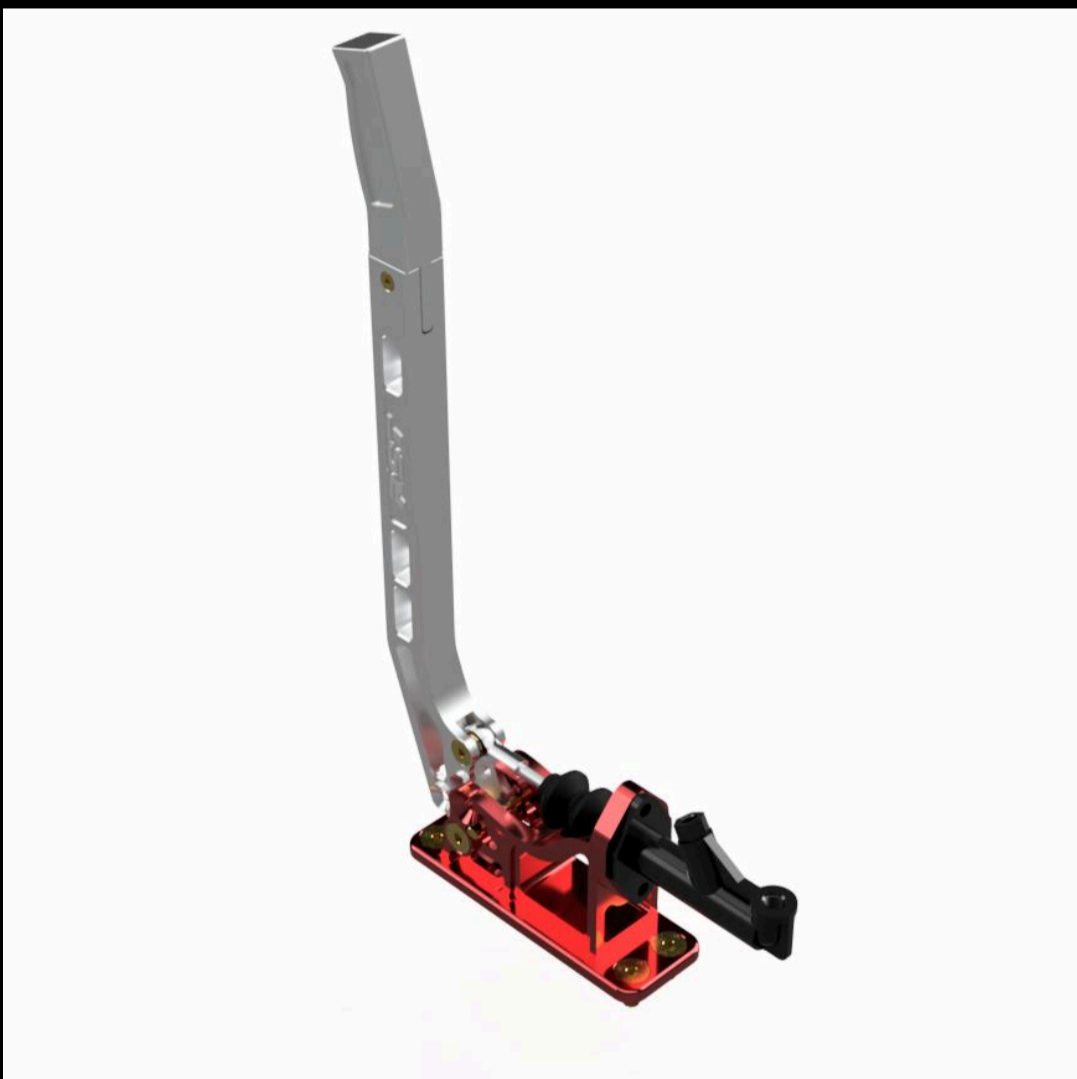
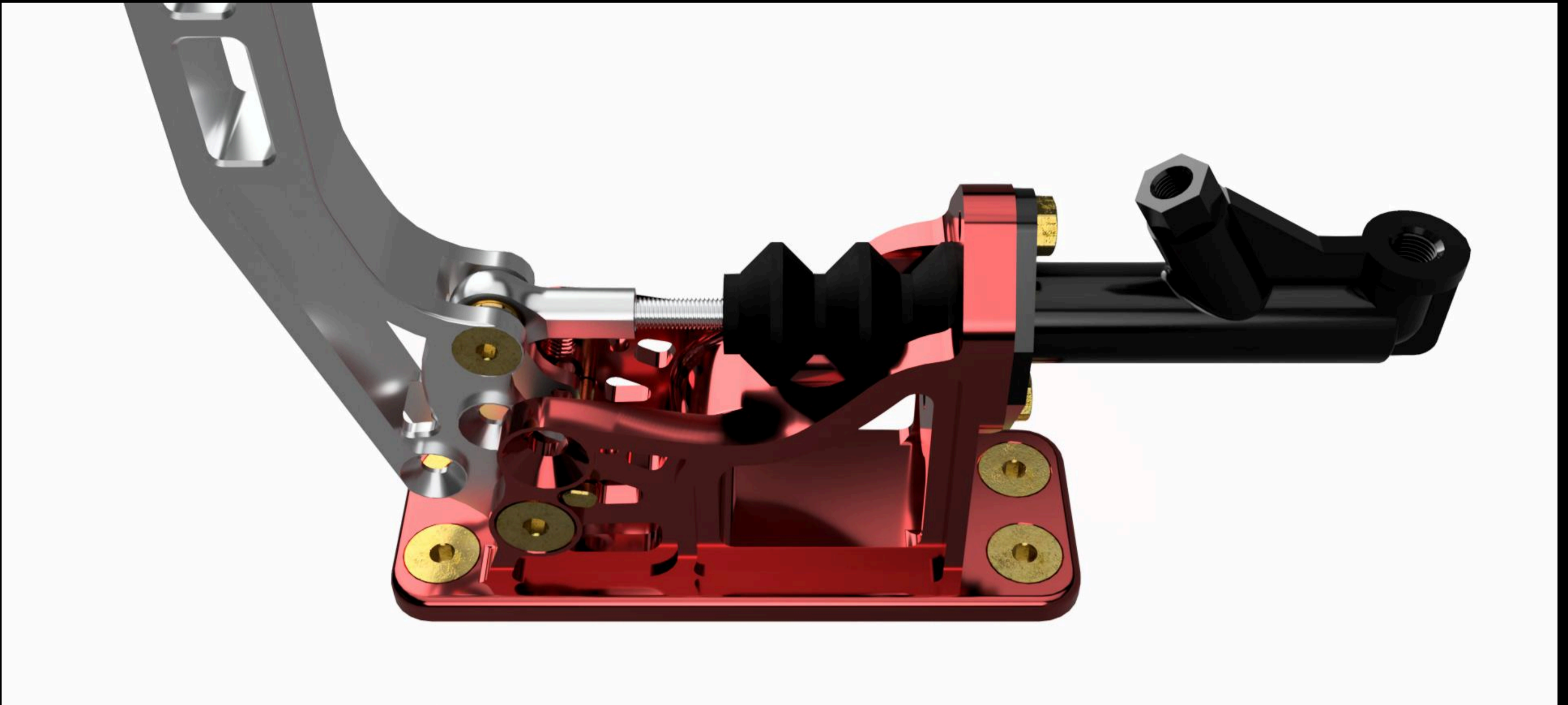
**PRODUCT DESCRIPTION:**

Made from CNC-machined 7075 aluminum (PA9), it provides excellent rigidity and direct force transfer to the braking system. The long, well-balanced handle allows for precise modulation of braking force-regardless of track or surface conditions. The system is based on an independent hydraulic cylinder, meaning the handbrake operates separately from the stock braking system, without interfering with its performance. Engineered for intensive use, it's ready to perform where quick response and reliability are critical.

KEY PRODUCT FEATURES:

- Precision: The design was created in a CAD environment, ensuring high precision and quality
- Durable construction: The design was tested using FEA (Finite Element Analysis) to simulate the forces acting within the system
- Anodized surface: To improve surface resistance to oxidation, an anodizing process was carried out.



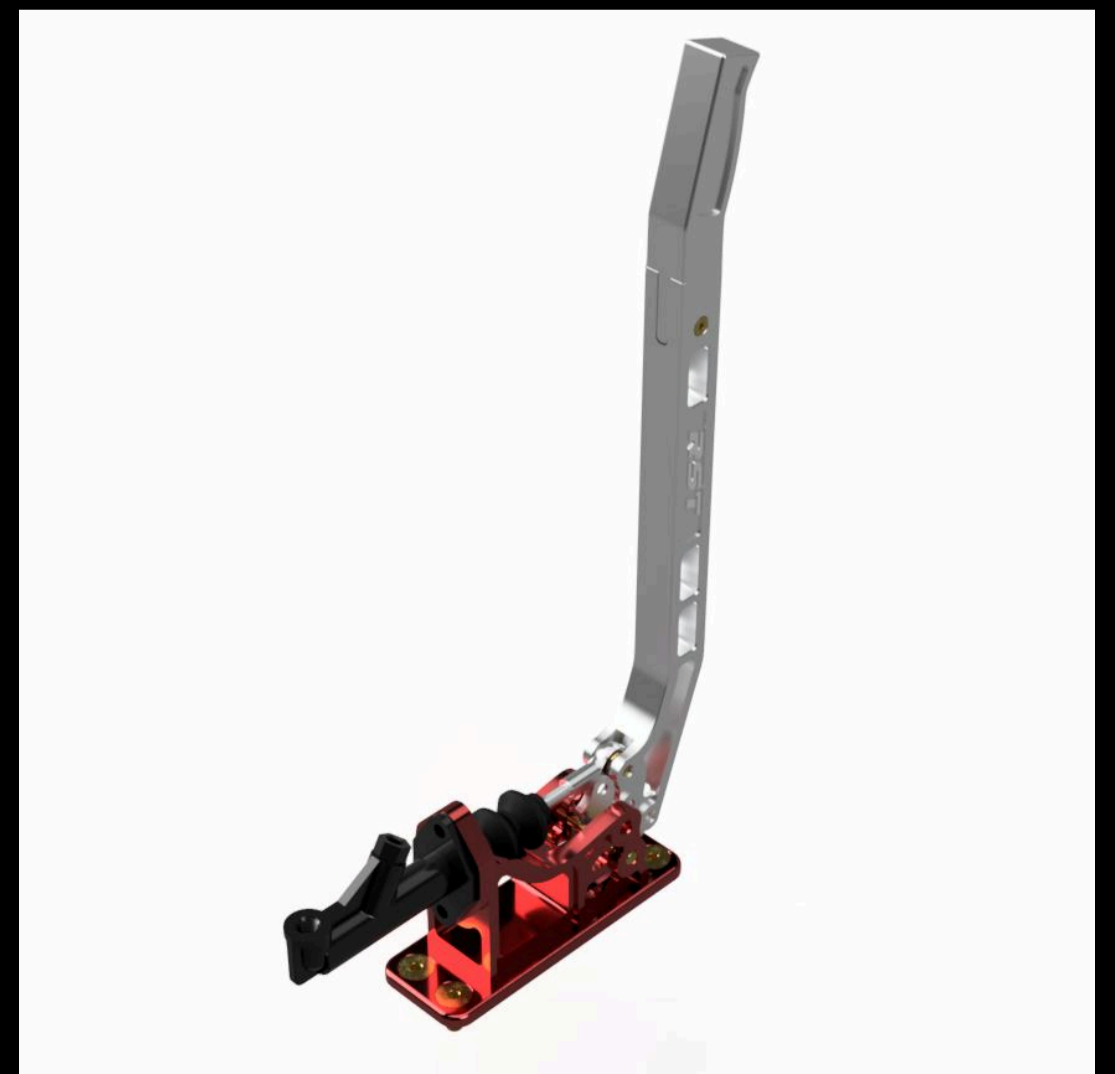


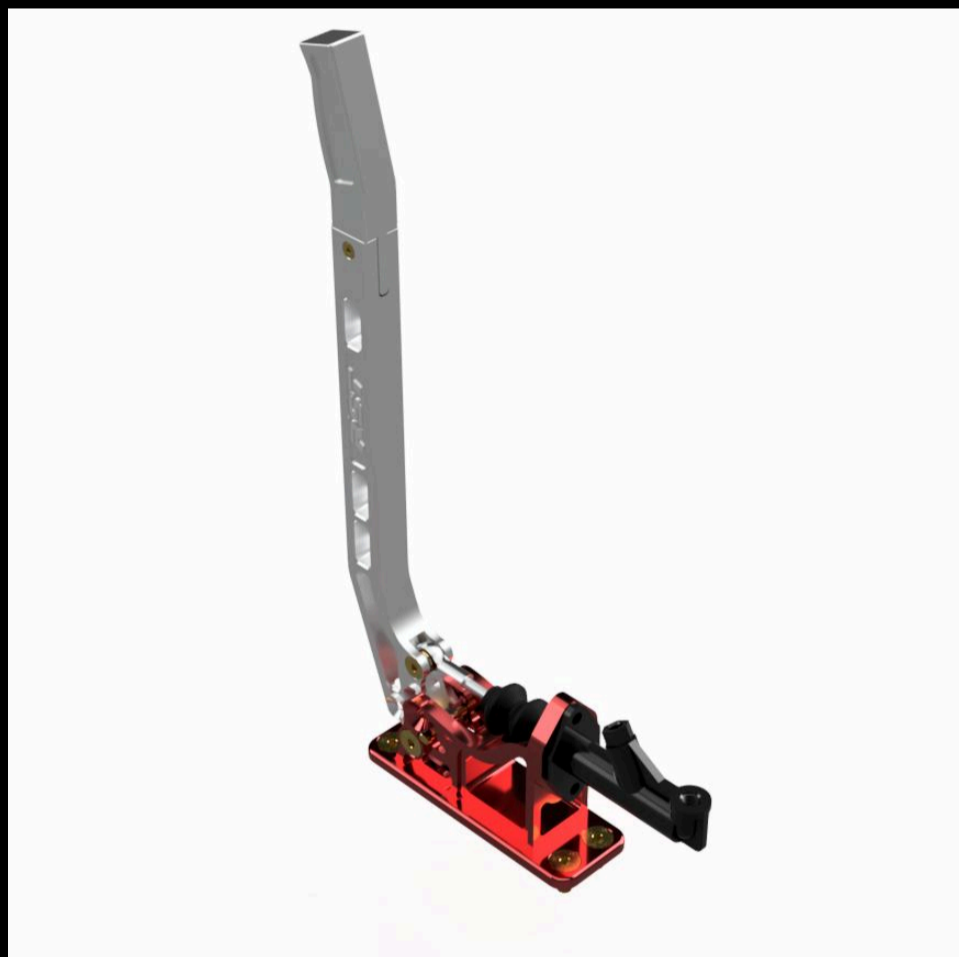
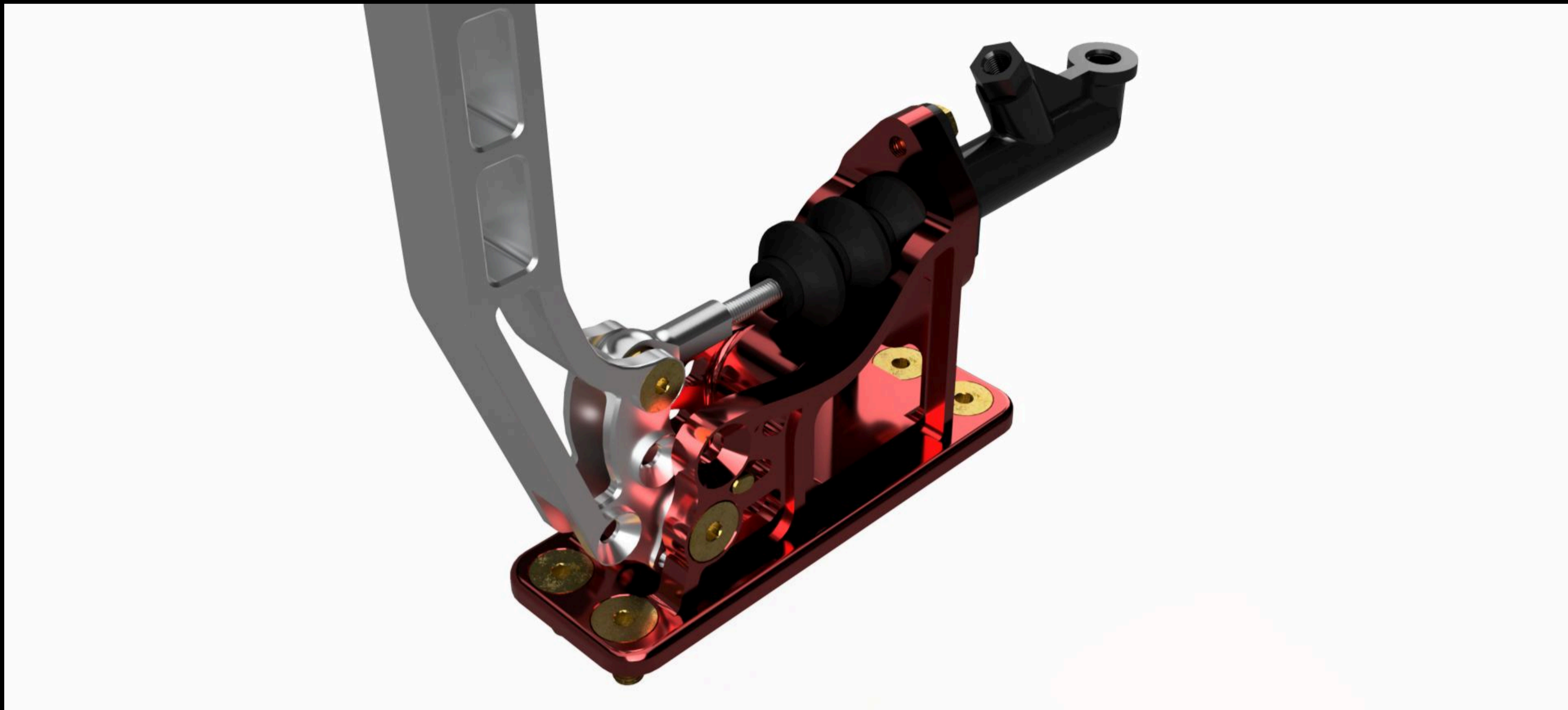
SET INCLUDES:

- Billet housing
- Mounting kit
- Billet lever

APPLICATIONS:

The product is intended for a wide range of applications in sports, racing, and performance-tuned vehicles.





INSTALLATION INSTRUCTIONS:

TECHNICAL DATA SHEET

DIFFICULTY LEVEL:

Intermediate. Intended for installation by qualified individuals.

NOTES:

Before purchasing, make sure the product is compatible with your vehicle.

CONTACT:

+48 572 323 272

biuro@restomotive.eu

www.restomotive.eu