



The custom trailing arm has been designed to eliminate common issues often found in factory suspension setups. Its innovative construction is based on the use of uniball spherical bearings, which not only allow for precise adjustment of the arm's overall length but also significantly improve structural rigidity compared to traditional metal-rubber bushings.

HIGH QUALITY

THE TRAILING ARM HAS BEEN DESIGNED AND MANUFACTURED FROM HIGH-QUALITY STRUCTURAL STEEL TUBES, ENSURING STRENGTH AND RESISTANCE TO LOADS.

ADJUSTMENT

THE ADJUSTABLE LENGTH OF THE TRAILING ARM ALLOWS FOR OPTIMAL FINE-TUNING OF THE SUSPENSION CHARACTERISTICS, RESULTING IN IMPROVED VEHICLE CONTROL AND A MORE DYNAMIC DRIVING EXPERIENCE.

COMPATIBILITY

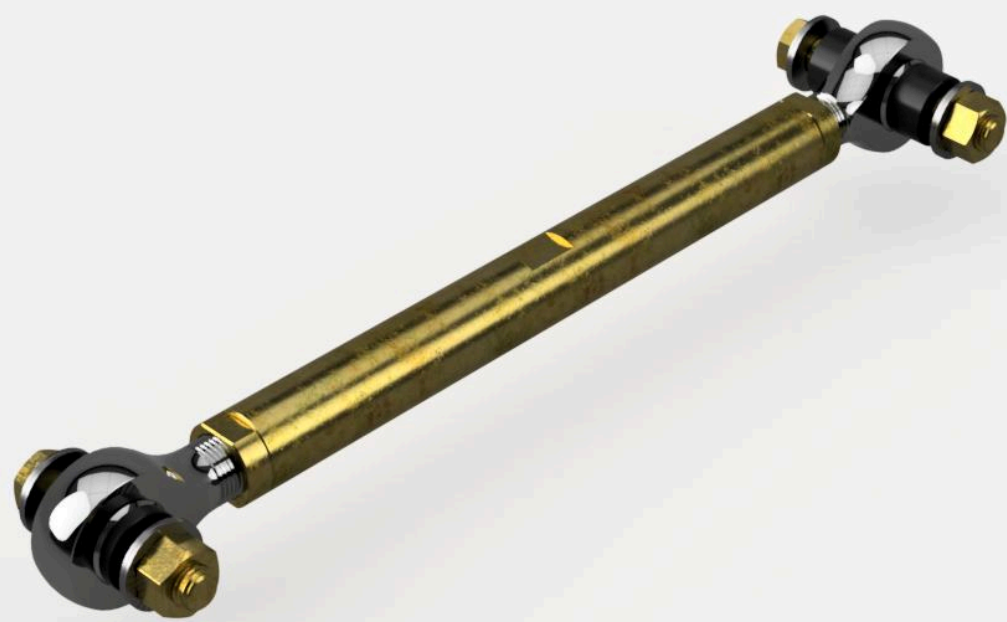
FULLY COMPATIBLE WITH MODERN SUSPENSION SYSTEMS.

CORROSION PROTECTION

FOR LONG-LASTING PROTECTION AGAINST CORROSION, THE CONTROL ARM SURFACE HAS BEEN ZINC-COATED.

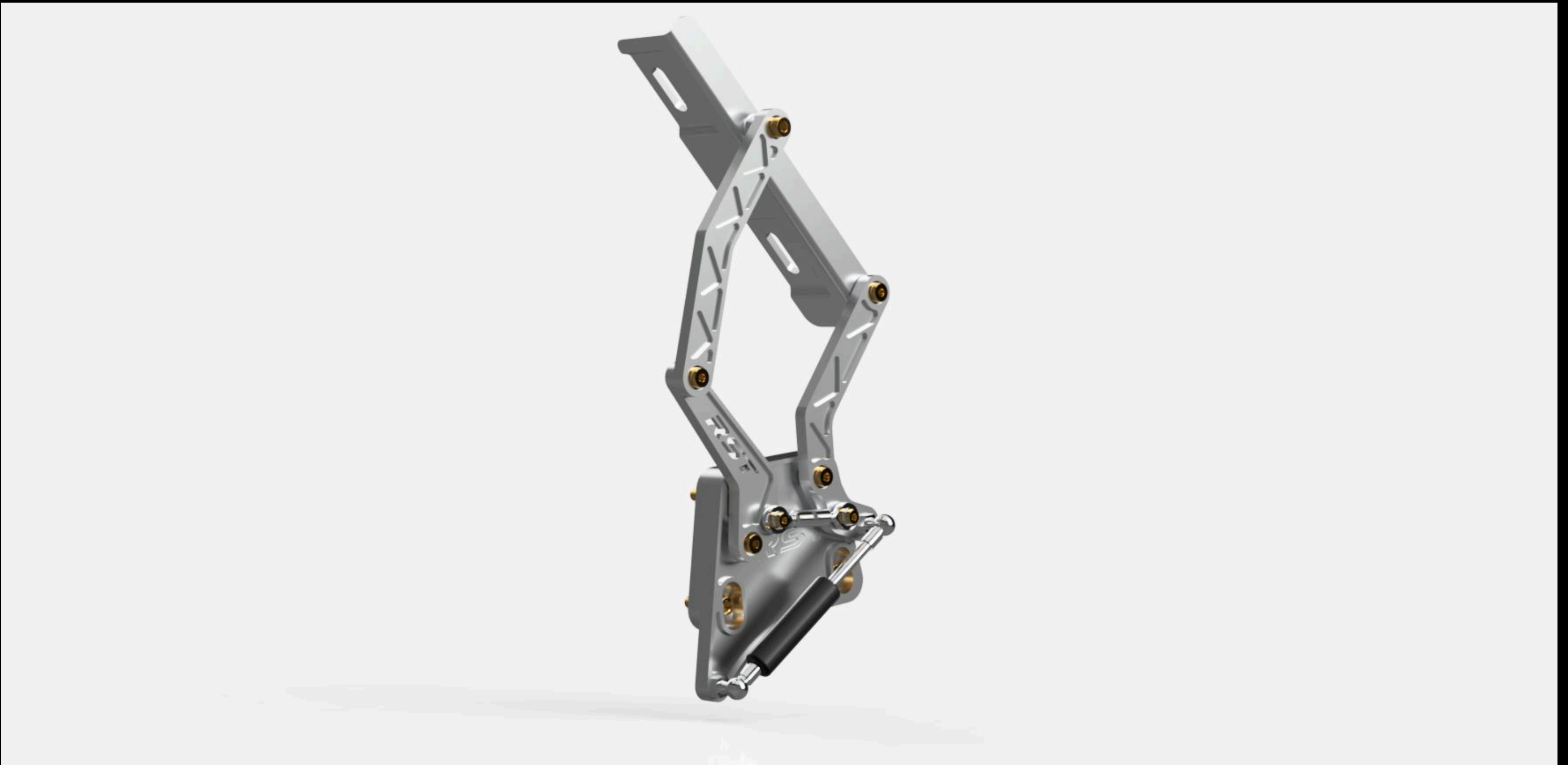
**PRODUCT DESCRIPTION**

The trailing arm is made of high-quality structural steel tubes (S355) with a 30 mm diameter and 5 mm wall thickness, ensuring exceptional strength and resistance to loads, even under extreme operating conditions. It is one of the key components of the Coilover/4-link suspension system, responsible for keeping the rear axle aligned with the vehicle and preventing lateral movement.

**KEY PRODUCT FEATURES**

- Compatibility with custom RST suspension
- Material: Structural steel S355
- Design based on 3D scans with accuracy up to tenths of a millimeter
- Adjustable length



**THE KIT INCLUDES**

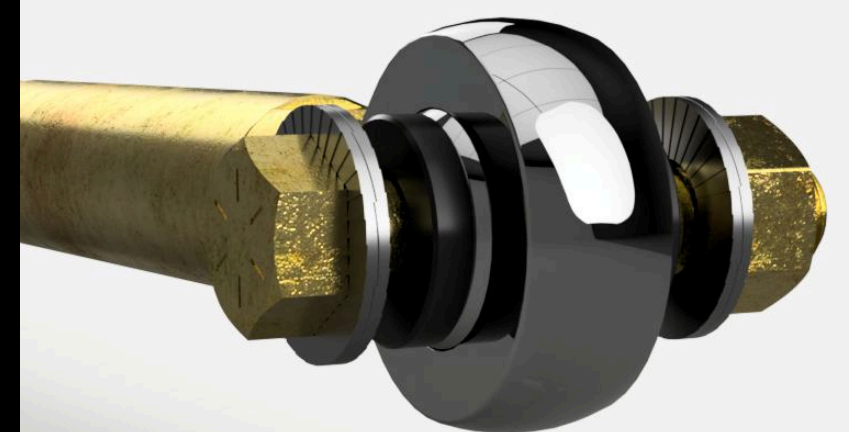
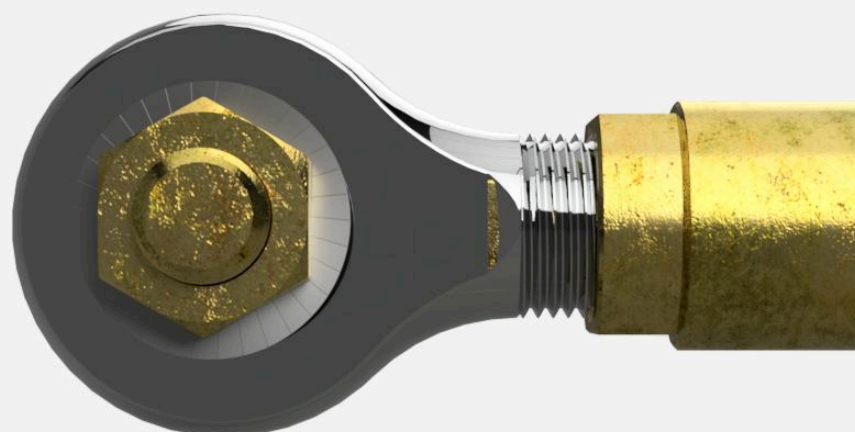
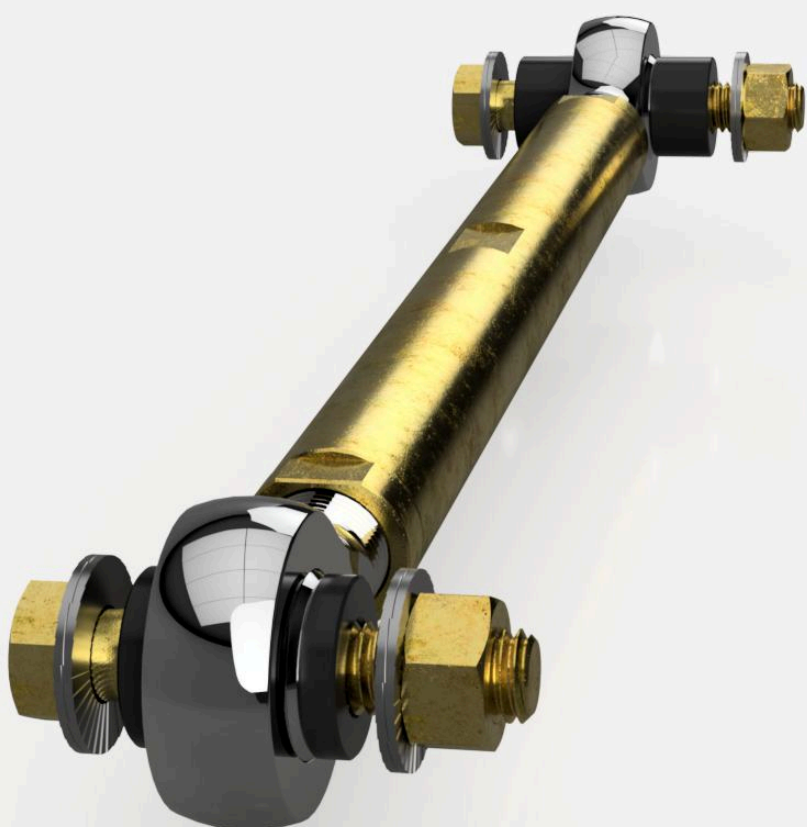
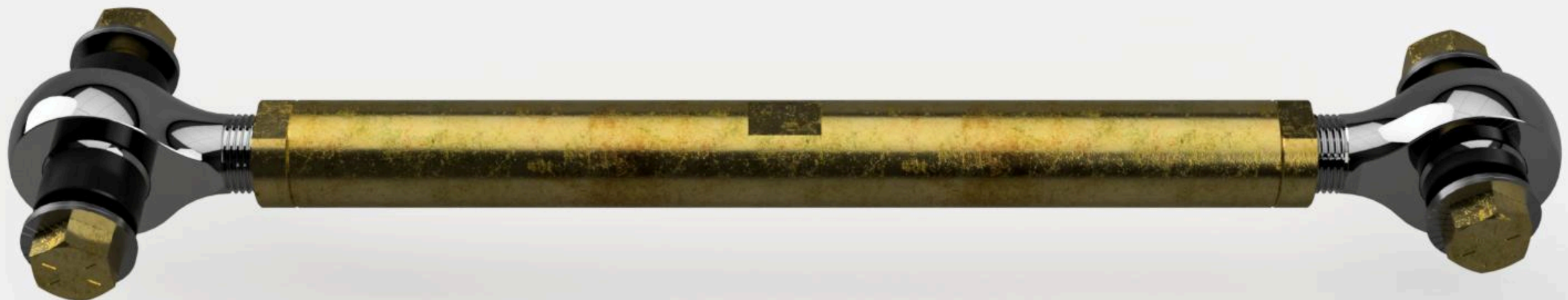
- Control arm body (1 pc)
- Spherical bearings (uniballs) (2 pcs)
- Mounting kit

APPLICATIONS

This product is compatible with the following Ford Mustang model years:

- Ford Mustang Fastback 1964/5-1966
- Ford Mustang Fastback 1967-1968
- Ford Mustang Coupe 1964/5-1966
- Ford Mustang Coupe 1967-1968
- Ford Mustang Convertible 1964/5-1966
- Ford Mustang Convertible 1967-1968





INSTALLATION INSTRUCTIONS

Technical data sheet

DIFFICULTY LEVEL

Intermediate - automotive enthusiasts with basic knowledge will be able to install the purchased part.

NOTES

*Before purchasing, make sure the product fits your vehicle

CONTACT

+48 572 323 272

biuro@restomotive.eu

www.restomotive.eu