



The custom high-pressure monotube gas shock absorber features an internal gas reservoir integrated into the main body. This design ensures compactness, stable gas pressure, and improved damping of road irregularities, resulting in efficient performance and durability in advanced suspension systems. The shock absorber is compatible with our front suspension systems: Bolt-On and Trapez Billet.

**HIGH QUALITY**

**HEIGHT ADJUSTMENT**

**LONG SERVICE LIFE**

**IMPROVED STABILITY**

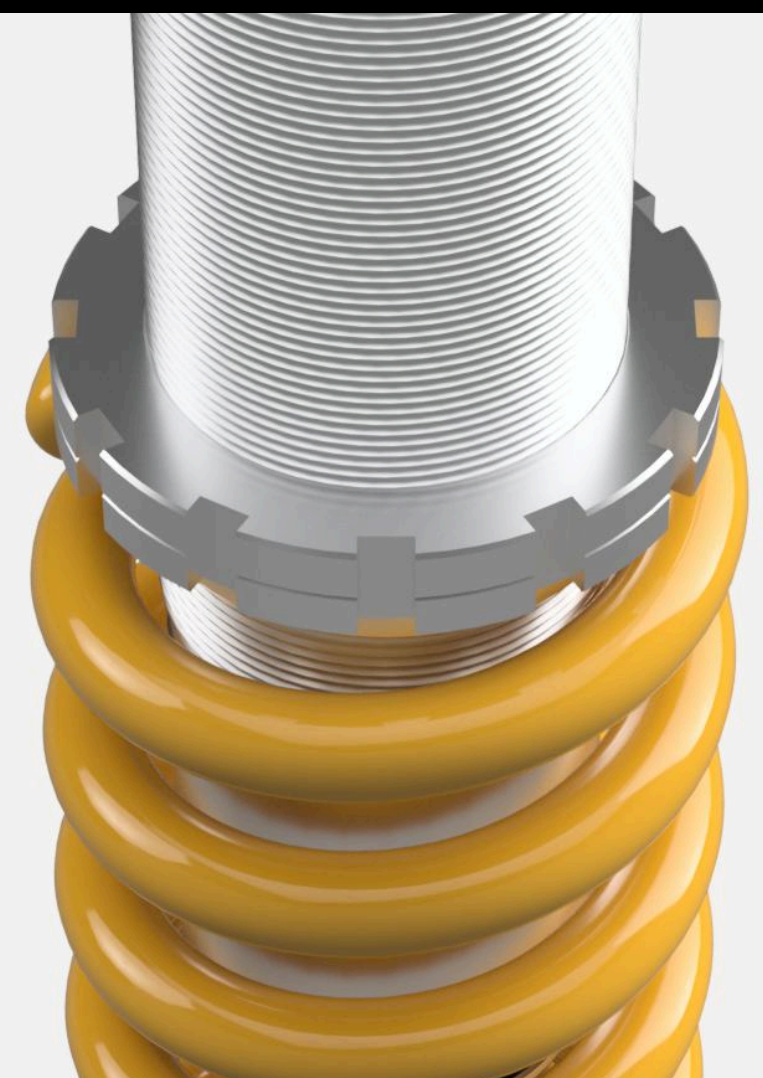


#### PRODUCT DESCRIPTION

The STXS46 shock absorber is an advanced solution primarily used in sports vehicles, where precision, response, and durability are of key importance. Its monotube design stands out by maintaining stable damping even during intensive driving, since the oil and gas are separated, eliminating the risk of aeration and performance loss. Thanks to improved cooling, it retains consistent operating parameters, while the larger piston diameter ensures more precise response to road irregularities and greater control over the vehicle. In practice, this translates into better traction, more confident handling, and the ability to fine-tune suspension settings, which benefits both comfort in everyday driving and safety during dynamic use.

#### KEY PRODUCT FEATURES

- Fitment to our Trapez Billet and Bolt-On suspension
- Monotube design
- 46 mm main piston
- Adjustable preload and rebound damping



**THE KIT INCLUDES**

- Shock absorber (1 pc)
- Mounting kit

**APPLICATIONS**

This product is compatible with the following Ford Mustang model years:

- Ford Mustang Fastback 1964/5-1966
- Ford Mustang Fastback 1967-1968
- Ford Mustang Coupe 1964/5-1966
- Ford Mustang Coupe 1967-1968
- Ford Mustang Convertible 1964/5-1966
- Ford Mustang Convertible 1967-1968







#### INSTALLATION INSTRUCTIONS

Technical data sheet



#### DIFFICULTY LEVEL

Advanced - installing this product requires extensive specialist knowledge.



#### NOTES

\*Before purchasing, ensure that the product is compatible with your vehicle

#### CONTACT

+48 572 323 272

biuro@restomotive.eu

[www.restomotive.eu](http://www.restomotive.eu)