

The milled start panel is a high-quality control element made from precisely machined aluminum. It is designed for installation in sports cars, racing vehicles, and tuning projects.

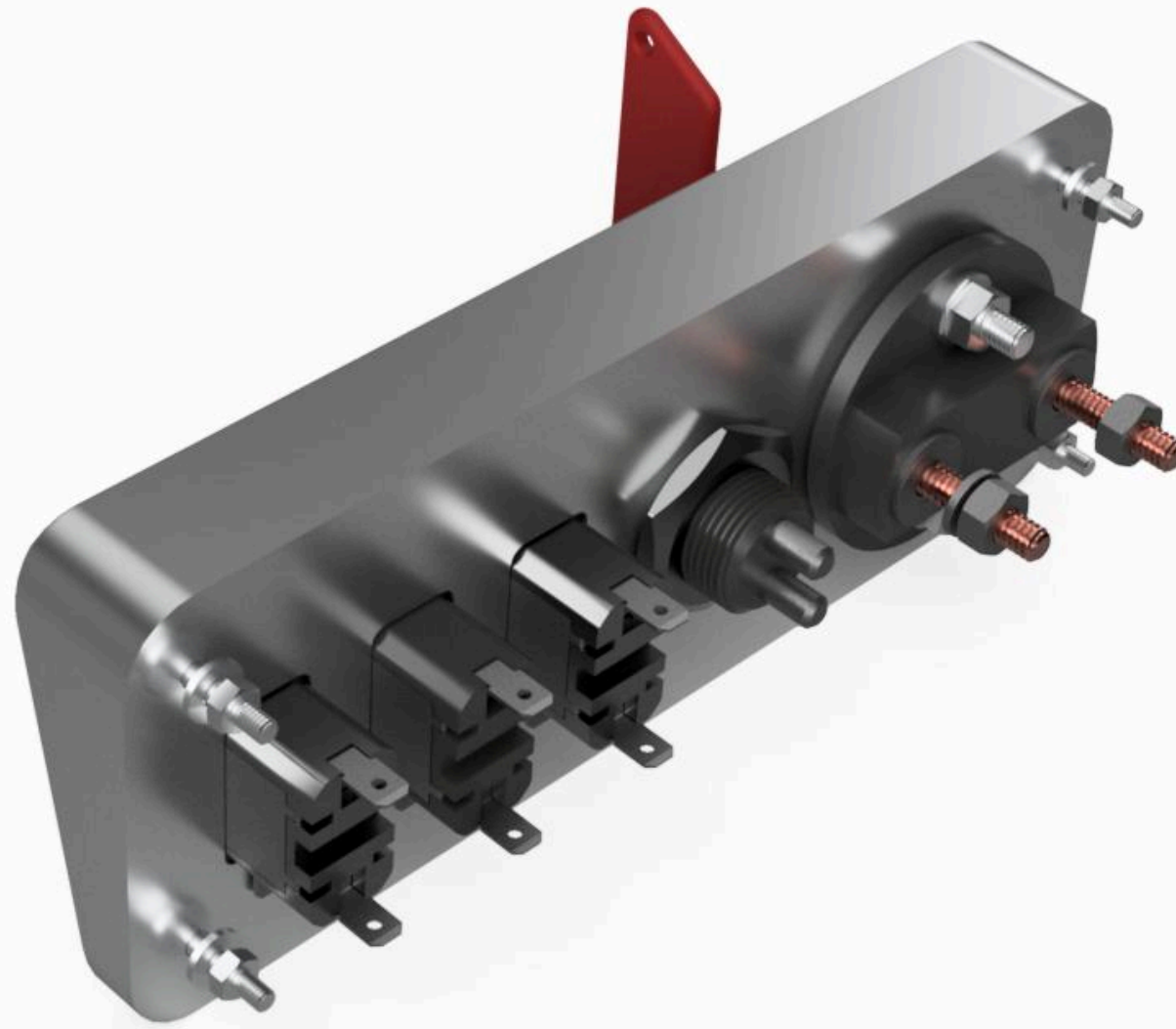
The panel includes a Start/Stop button, allowing for quick engine start, and three toggle switches that can be used to operate various systems, such as ignition, fans, fuel pumps, or lighting. With its ergonomic layout and robust construction, it ensures reliability and user comfort in dynamic conditions.

PROFESSIONAL DESIGN

PROJECT EXECUTED  
BASED ON A 3D SCAN

PRECISION OF EXECUTION

IMMEDIATE AVAILABILITY



#### PRODUCT DESCRIPTION

The start panel is made from AW 5754 alloy. Manufactured using CNC milling technology, which guarantees perfect finishing and fitting. The set includes a 2-pole safety switch, a start button, and three toggle switches that can handle additional functions such as fans, fuel pumps, or ignition.

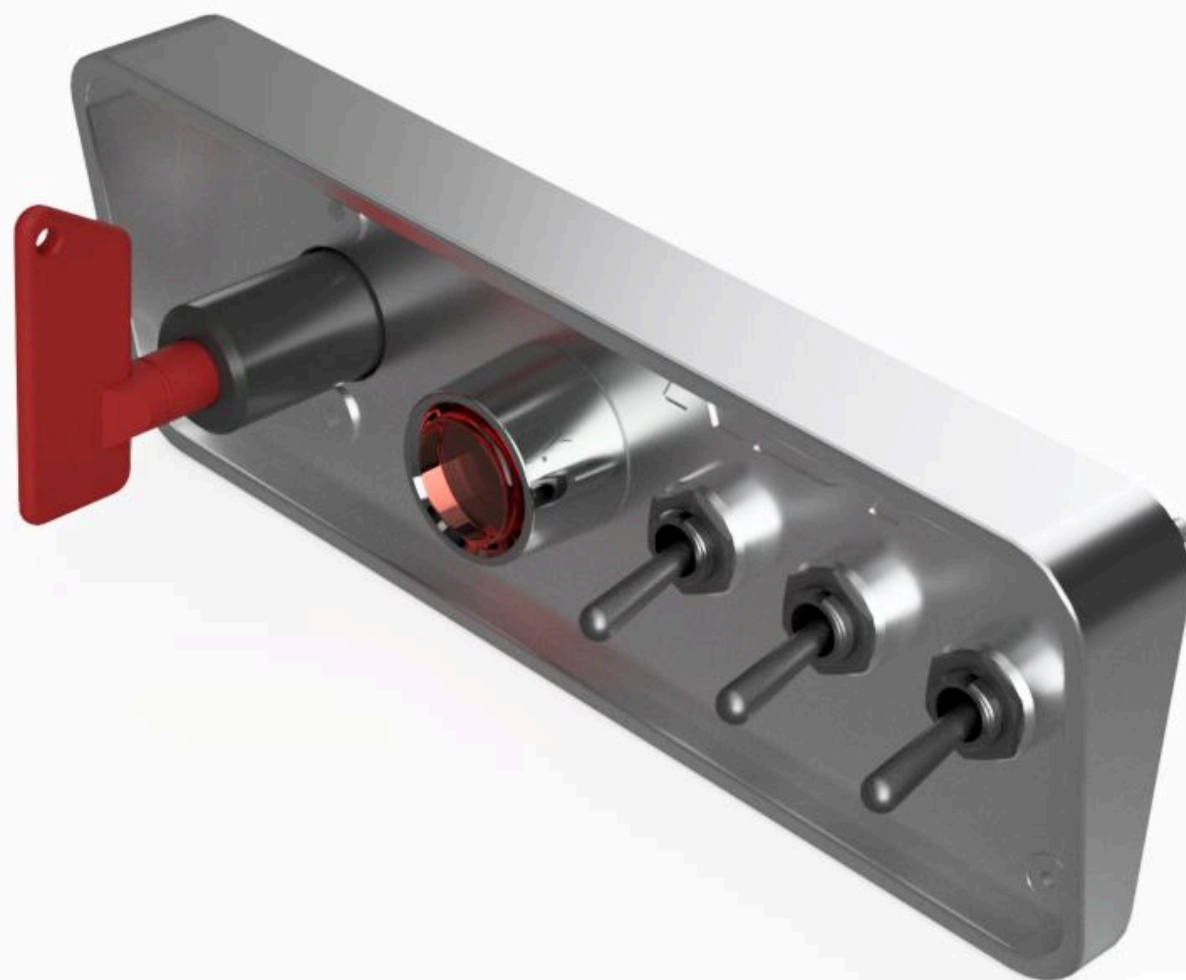
The use of the start/stop button not only facilitates starting the car but also adds a sporty character.



#### MAIN PRODUCT FEATURES

- Material: Aluminum AW 5754 - lightweight and aesthetic
- 2-pole safety switch (upon request, we can provide a set with a six-pole switch)
- Universal fitting
- Modern design - gives the interior a professional, sporty look





**THE SET INCLUDES:**

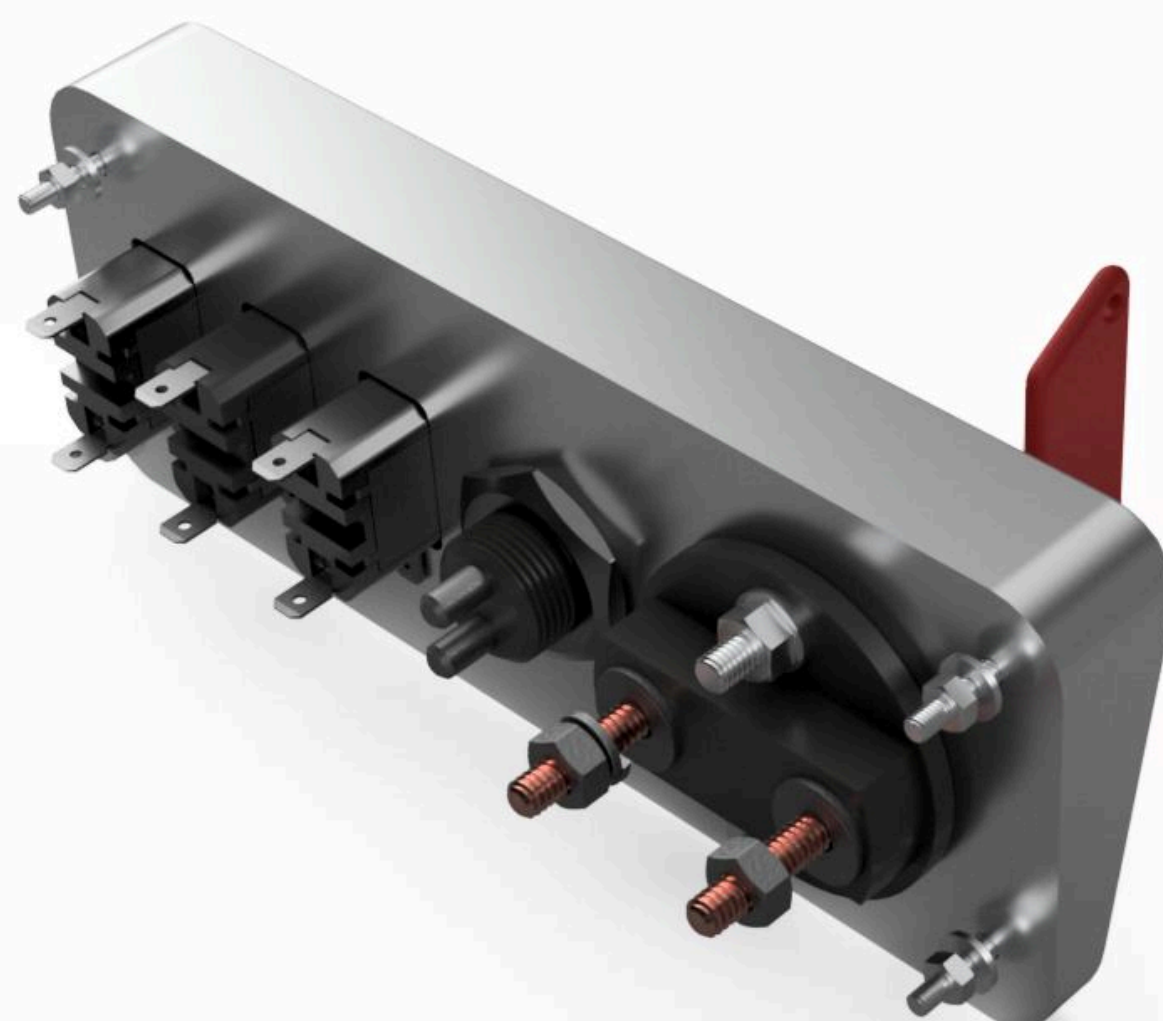
- Pole safety switch (upon request 6-pole)
- Start button
- 12V 20A toggle switches (3 pcs.)
- Mounting kit

**APPLICATION:**

The product is intended for a wide range of applications in sports, racing, and tuning vehicles.







**INSTALLATION INSTRUCTIONS:**

Technical data sheet

**DIFFICULTY LEVEL:**

Easy

**NOTES:**

\*Before purchasing, please ensure that the product fits your car.

**CONTACT:**

+48 572 323 272

biuro@restomotive.eu

[www.restomotive.eu](http://www.restomotive.eu)